

PE anti-human CD161

Catalog # / Size: 2299520 / 100 tests
2299515 / 25 tests

2299690 / 100 µg

Clone: HP-3G10

Isotype: Mouse IgG1, κ

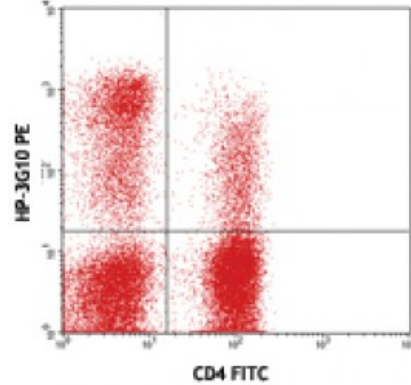
Immunogen: Human NK cells

Reactivity: Human

Preparation: The antibody was purified by affinity chromatography, and conjugated with PE under optimal conditions. The solution is free of unconjugated PE and unconjugated antibody.

Formulation: microg size: Phosphate-buffered solution, pH 7.2, containing 0.09% sodium azide.
test sizes: Phosphate-buffered solution, pH 7.2, containing 0.09% sodium azide and 0.2% (w/v) BSA (origin USA).

Concentration: microg sizes: 0.2 mg/ml
test sizes: lot-specific



Human peripheral blood lymphocytes stained with CD4 FITC and HP-3G10 PE

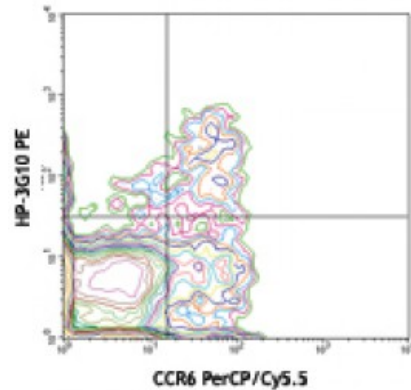
Applications:

Applications: Flow Cytometry

Recommended Usage: Each lot of this antibody is quality control tested by immunofluorescent staining with flow cytometric analysis. For flow cytometric staining using the microg size, the suggested use of this reagent is ≤1.0 microg per million cells in 100 microL volume. **Test size products are transitioning from 20 microL to 5 microL per test.** Please check your vial or your CoA to find the suggested use of this reagent per million cells in 100 microL staining volume or per 100 microL of whole blood. It is recommended that the reagent be titrated for optimal performance for each application.

Application Notes: Additional reported applications (for the relevant formats) include: inhibition of cytokine production and Western blotting under nonreducing conditions.

Application References: 1. Gumá M, et al. 2004. *Blood* 104:3664.
2. Exley M, et al. 1998. *J. Exp. Med.* 188:867.
3. Marquez C, et al. 1998. *Blood* 91:2760.



Human peripheral blood CD4+ lymphocytes stained with CCR6 PerCP/Cy5.5 and HP-3G10 PE

Description: CD161 is a type II transmembrane glycoprotein, also known as NKR-P1A, that is expressed as a 40-44 kD homodimer. It is a member of the C-type lectin superfamily. CD161 is expressed on a majority of NK cells, NKT cells, and subsets of peripheral T cells and CD3⁺ thymocytes. It has been reported that Th17 cells are a subpopulation of CD4⁺CD161⁺CCR6⁺ cells. While the biological function of CD161 is not clear, it has been suggested to serve either as a stimulatory receptor or to inhibit NK cell-mediated cytotoxicity and cytokine production. LLT-1 (lectin-like transcript-1, also named as osteoclast inhibitory lectin or CLEC2D) is the ligand of CD161.

Antigen
References:

1. Takahashi T, *et al.* 2006. *J. Immunol.* 176:211.
2. Cosmi L, *et al.* 2008. *J. Exp. Med.* 205:1903.
3. Aldemir H, *et al.* 2005. *J. Immunol.* 175:7791.
4. Rosen DB, *et al.* 2008. <