

APC/Fire™ 750 anti-human CD158 (KIR2DL1/S1/S3/S5)

Catalog # / Size: 2297595 / 25 tests
2297600 / 100 tests

Clone: HP-MA4

Isotype: Mouse IgG2b, κ

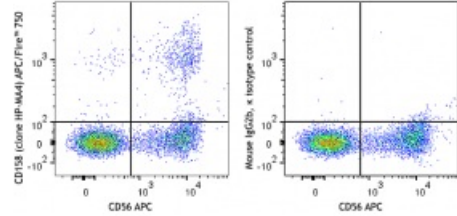
Immunogen: Human NK cell clone LB2

Reactivity: Human, Non-human primate, Other

Preparation: The antibody was purified by affinity chromatography and conjugated with APC/Fire™ 750 under optimal conditions.

Formulation: Phosphate-buffered solution, pH 7.2, containing 0.09% sodium azide and 0.2% (w/v) BSA (origin USA)

Concentration: Lot-specific



Human peripheral blood lymphocytes were stained with CD56 APC and CD158 (KIR2DL1/S1/S3/S5) (clone HP-MA4) APC/Fire™ 750 (left) or mouse IgG2b, κ APC/Fire™ 750 isotype control (right).

Applications:

Applications: Flow Cytometry

Recommended Usage: Each lot of this antibody is quality control tested by immunofluorescent staining with flow cytometric analysis. For flow cytometric staining, the suggested use of this reagent is 5 µL per million cells in 100 µL staining volume or 5 µL per 100 µL of whole blood. It is recommended that the reagent be titrated for optimal performance for each application.

* APC/Fire™ 750 has a maximum excitation of 650 nm and a maximum emission of 787 nm.

Application Notes: mAb HP-MA4 reacts with KIR2DL1 (CD158a), KIR2DS1 (CD158h), KIR2DS3, and KIR2DS5 (CD158g).

Additional reported applications include: inhibits NK cell mediated cytotoxicity and immunoprecipitation.

This clone has been tested in-house and determined to not be suitable for applications in immunohistochemistry of paraffin-embedded tissue sections (IHC-P).

Application References: 1. De Miguel M and M. Lopez-Botet. 2002. *Inmunologia*. 21:187
2. Goodridge JP, et al. 2013. *J. Immunol.* 191:3553. [PubMed](#)

Description: CD158 molecules, also known as KIRs (killer cell immunoglobulin-like receptors), are a family of transmembrane proteins with either two (KIR2D) or three (KIR3D) Ig-like extracellular domains. Some KIRs with long cytoplasmic domains contain ITIMs and possess inhibitory functions and others with short cytoplasmic region lack ITIM and have activation functions. 14 polymorphic KIR genes have been reported in humans. CD158 is mainly expressed on a subset of NK cells and a small population of CD8⁺ T cells. HLA-C is the ligand of CD158a/h.

Antigen
References: 1. Zola H, *et al.* eds. 2007. *Leukocyte and Stromal Cell Molecules: The CD Markers*. Wiley-Liss A John Wiley & Sons Inc, Publication