

PE anti-human CD328 (Siglec-7)

Catalog # / Size: 2296020 / 100 tests
2296015 / 25 tests

Clone: 6-434

Isotype: Mouse IgG1, κ

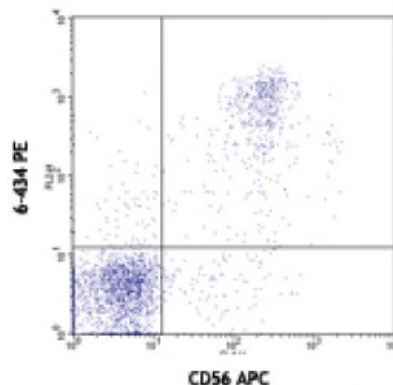
Reactivity: Human

Preparation: The antibody was purified by affinity chromatography, and conjugated with PE under optimal conditions. The solution is free of unconjugated PE and unconjugated antibody.

Formulation: Phosphate-buffered solution, pH 7.2, containing 0.09% sodium azide and 0.2% (w/v) BSA (origin USA).

Workshop Number: VIII 80652

Concentration: Lot-specific



Human peripheral blood lymphocytes stained with 6-434 PE and HCD56 (CD56) APC

Applications:

Applications: Flow Cytometry

Recommended Usage: Each lot of this antibody is quality control tested by immunofluorescent staining with flow cytometric analysis. **Test size products are transitioning from 20 microL to 5 microL per test.** Please check your vial or your CoA to find the suggested use of this reagent per million cells in 100 microL staining volume or per 100 microL of whole blood. It is recommended that the reagent be titrated for optimal performance for each application.

Application References: NULL

Description: Siglec-7, also known as p75/AIRM1, is a 75 kD type I transmembrane protein and a member of the family of sialic acid-binding immunoglobulin-like lectins (Siglecs). It is primarily found on NK cells and monocytes. The cytoplasmic domain of Siglec-7 contains immunoreceptor tyrosine-based inhibitory motif (ITIM). CD328 mediates sialic acid-dependent cell-cell binding and functions as an inhibitory receptor of NK cells. CD328 preferentially binds to sialylated glycans with α 2,8 disialyl and α 2,6 sialyl residues.

Antigen References:

1. Avril T, *et al.*. 2006. *Infection and Immunity* 74:4133
2. Avril T, *et al.*. 2004. *J. Immunol.* 173:6841
3. Yamaji T, *et al.*. 2005. *Glycobiology* 15:667