

Brilliant Violet 421™ anti-human CD44

Catalog # / Size: 2294050 / 100 tests
2294045 / 25 tests

Clone: BJ18

Isotype: Mouse IgG1, κ

Immunogen: Normal human PBL

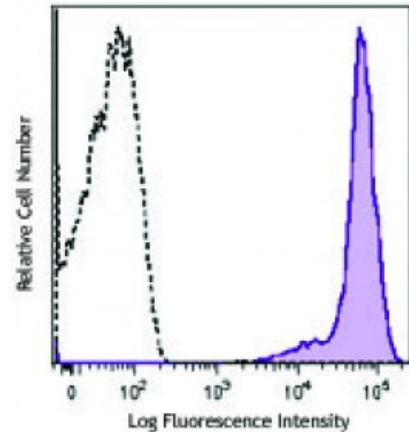
Reactivity: Human

Preparation: The antibody was purified by affinity chromatography and conjugated with Brilliant Violet 421™ under optimal conditions. The solution is free of unconjugated Brilliant Violet 421™ and unconjugated antibody.

Formulation: Phosphate-buffered solution, pH 7.2, containing 0.09% sodium azide and BSA (origin USA).

Workshop Number: VI A034

Concentration: Lot-specific



Human peripheral blood lymphocytes were stained with CD44 (clone BJ18) Brilliant Violet 421™ (filled histogram) or mouse IgG1, κ Brilliant Violet 421™ isotype control (open histogram).

Applications:

Applications: Flow Cytometry

Recommended Usage: Each lot of this antibody is quality control tested by immunofluorescent staining with flow cytometric analysis. For flow cytometric staining, the suggested use of this reagent is ≤ 5 microL per million cells or 5 microL per 100 microL of whole blood. It is recommended that the reagent be titrated for optimal performance for each application.

Brilliant Violet 421™ excites at 405 nm and emits at 421 nm. The standard bandpass filter 450/50 nm is recommended for detection. Brilliant Violet 421™ is a trademark of Sirigen Group Ltd.

This product is subject to proprietary rights of Sirigen Inc. and is made and sold under license from Sirigen Inc. The purchase of this product conveys to the buyer a non-transferable right to use the purchased product for research purposes only. This product may not be resold or incorporated in any manner into another product for resale. Any use for therapeutics or diagnostics is strictly prohibited. This product is covered by U.S. Patent(s), pending patent applications and foreign equivalents.

Application References: 1. Kishimoto T, *et al.* eds. 1997 *Leucocyte Typing VI: White Cell Differentiation Antigen*. Garland Publishing Inc.

Description: CD44 is a 80-95 kD glycoprotein also known as Hermes, Pgp1, H-CAM, or HUTCH. It is expressed on all leukocytes, endothelial cells, hepatocytes, and mesenchymal cells. As B and T cells become activated or progress to the memory stage, CD44 expression increases from a low or mid level of intensity to high expression levels. Thus, CD44 has been reported to be a valuable marker for memory cell subsets. CD44 is an adhesion molecule involved in leukocyte attachment to and rolling on endothelial cells, homing to peripheral lymphoid

organs and to the sites of inflammation, and leukocyte aggregation.

**Antigen
References:**

1. Barclay AN, *et al.* 1997. *The Leukocyte Antigen FactsBook* Academic Press.
2. Haynes BF, *et al.* 1991. *Cancer Cells* 3:347.
3. Goldstein LA, *et al.* 1989. *Cell* 56:1063.
4. Mikecz K, *et al*