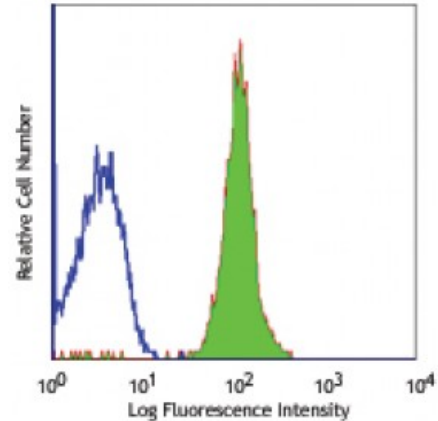


Purified anti-human CD48

Catalog # / Size: 2283510 / 100 µg
Clone: BJ40
Isotype: Mouse IgG1, κ
Reactivity: Human
Preparation: The antibody was purified by affinity chromatography.
Formulation: Phosphate-buffered solution, pH 7.2, containing 0.09% sodium azide.
Concentration: 0.5



Human peripheral blood lymphocytes stained with purified BJ40, followed by anti-mouse IgG FITC

Applications:

Applications: Other

Recommended Usage: Each lot of this antibody is quality control tested by immunofluorescent staining with flow cytometric analysis. For immunofluorescent staining, it is recommended to use at ≤ 2.0 microg per 10^6 cells in 100 microL volume or 100 microL of whole blood. It is recommended that the reagent be titrated for optimal performance for each application.

Application Notes: Additional reported applications (for the relevant formats) include: immunoprecipitation.

Application References: 1. Kishimoto T, *et al.* 1997. *Leucocyte Typing VI: White Cell Differentiation Antigens*. Garland Publishing Inc.
2. Wang R, *et al.* 2012. *J. Leukoc Biol.* 91:299. [PubMed](#)

Description: CD48 is a 40-47 kD GPI-anchored membrane protein, also known as Blast-1 and HuLy-m3. It is a member of the CD2 family that contains 2 IgSF domains and is widely expressed on both resting and activated hematopoietic cells with the exception of granulocytes, platelets, and erythrocytes. CD48 binds to CD2 at a considerably (>100 -fold) lower affinity than CD58. It is thought to contribute to T cell activation. The cytoplasmic tail of CD48 has been shown to bind to the kinases Lck and Fyn.

Antigen References: 1. Fisher RC and Thorley-Lawson DA. 1991. *Mol. Cell. Biol.* 11:1614.
2. Korinek V, *et al.* 1991. *Immunogenetics* 33:108.
3. Leukocyte Typing IV. Knapp W, *et al.* (Eds) Oxford University Press (1989)
4.