

PE anti-human CD68

Catalog # / Size: 2269035 / 25 tests
2269040 / 100 tests

Clone: Y1/82A

Isotype: Mouse IgG2b, κ

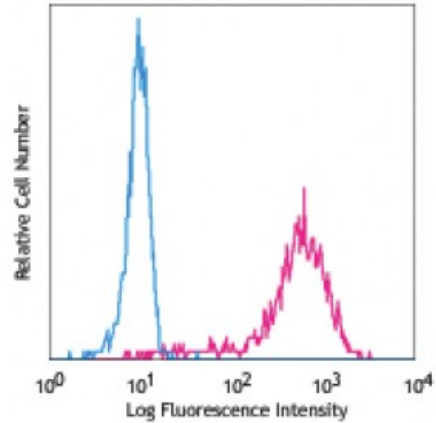
Reactivity: Human

Preparation: The antibody was purified by affinity chromatography, and conjugated with PE under optimal conditions. The solution is free of unconjugated PE and unconjugated antibody.

Formulation: Phosphate-buffered solution, pH 7.2, containing 0.09% sodium azide and 0.2% (w/v) BSA (origin USA).

Workshop Number: VI MR23

Concentration: Lot-specific



Human peripheral blood monocytes intracellularly stained with Y1/82A PE

Applications:

Applications: Flow Cytometry

Recommended Usage: Each lot of this antibody is quality control tested by intracellular immunofluorescent staining with flow cytometric analysis. **Test size products are transitioning from 20 microL to 5 microL per test.** Please check your vial or your CoA to find the suggested use of this reagent per million cells in 100 microL staining volume or per 100 microL of whole blood. It is recommended that the reagent be titrated for optimal performance for each application.

Application Notes: Additional reported application: immunohistochemical staining of frozen tissue sections. This clone was tested in-house and does not work on formalin fixed paraffin-embedded (FFPE) tissue.

Application References: 1. Doussis IA, *et al.* 1993. *J. Clin. Pathol.* 46:334.
2. Davey FR, *et al.* 1988. *J. Clin. Pathol.* 41:753.

Description: CD68 is a 110 kD glycoprotein, also known as macrosialin, belonging to the sialomucin family. It is closely related to the family of acidic, highly glycosylated lysosomal-associated membrane proteins (LAMPs). CD68 is predominately expressed in cytoplasmic granules of monocytes/macrophages, dendritic cells, and granulocytes. It is one of the useful myeloid cell markers. Further studies have shown that CD68 is also expressed by a subset of hematopoietic progenitors, γ/δ T cells, NK cells, LAK cells, subset of B cells, fibroblasts, and endothelial cells. The biological function of CD68 is still unknown.

Antigen References: 1. Holness CL and Simmons DL. 1993. *Blood* 81:1607.
2. Gottfried E, *et al.* 2008. *Scand. J. Immunol.* 67:453.
3. Hameed A, *et al.* 1994. *Hum. Pathol.* 25:872.