

Brilliant Violet 785™ anti-human CD163

Catalog # / Size: 2268160 / 100 tests
2268155 / 25 tests

Clone: GHI/61

Isotype: Mouse IgG1, κ

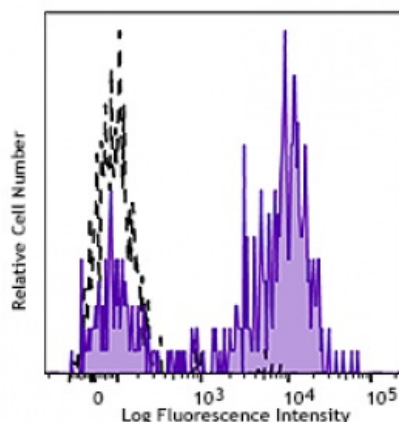
Reactivity: Other

Preparation: The antibody was purified by affinity chromatography and conjugated with Brilliant Violet 785™ under optimal conditions. The solution is free of unconjugated Brilliant Violet 785™ and unconjugated antibody.

Formulation: Phosphate-buffered solution, pH 7.2, containing 0.09% sodium azide and BSA (origin USA).

Workshop Number: VI M38

Concentration: Lot-specific



Human peripheral blood monocytes were stained with CD163 (clone GHI/63) Brilliant Violet 785™ (filled histogram) or mouse IgG1

Applications:

Applications: Flow Cytometry

Recommended Usage: Each lot of this antibody is quality control tested by immunofluorescent staining with flow cytometric analysis. For flow cytometric staining, the suggested use of this reagent is 5 μ l per million cells or 5 μ l per 100 μ l of whole blood. It is recommended that the reagent be titrated for optimal performance for each application.

Brilliant Violet 785™ excites at 405 nm and emits at 785 nm. The bandpass filter 780/60 nm is recommended for detection, although filter optimization may be required depending on other fluorophores used. Be sure to verify that your cytometer configuration and software setup are appropriate for detecting this channel. Refer to your instrument manual or manufacturer for support. Brilliant Violet 785™ is a trademark of Sirigen Group Ltd.

This product is subject to proprietary rights of Sirigen Inc. and is made and sold under license from Sirigen Inc. The purchase of this product conveys to the buyer a non-transferable right to use the purchased product for research purposes only. This product may not be resold or incorporated in any manner into another product for resale. Any use for therapeutics or diagnostics is strictly prohibited. This product is covered by U.S. Patent(s), pending patent applications and foreign equivalents.

Application Notes: Clone GHI/61 binds to domain 7 of CD163. Additional reported applications (for the relevant formats) include: immunocytochemical staining, immunoprecipitation, and western blot.¹

Application References:

1. Roth J, *et al.* 1994 *Transplantation*. 57:127
2. Van den Heuvel MM, *et al.* 1999 *J. Leukoc. Biol.* 66:858
3. Sulahian TH, *et al.* 2000 *Cytokines* 12:1312
4. Fabriek BO, *et al.* 20

Description: CD163 is a member of the group B scavenger receptor cysteine-rich superfamily, also known as GHI/61, M130, RM3/1, p155, hemoglobin-haptoglobin complex receptor, or macrophage-associated antigen. It is a 134 kD (non-reduced)/155 kD (reduced) glycoprotein primarily expressed on macrophages, Kupffer cells, monocytes, a subset of dendritic cells, and a subset of hematopoietic stem/progenitor cells. CD163 binds to haptoglobin-hemoglobin complex and TWEAK, and plays a role in clearing hemoglobin and regulating cytokine production by macrophages. Membrane CD163 can be cleaved by metalloproteinases (MMP), resulting in a soluble form. Elevated serum level of sCD163 has been implicated in many kinds of inflammatory diseases.

Antigen
References:

1. Roth J, *et al.* 1994 *Transplantation*. 57:127
2. Van den Heuvel MM, *et al.* 1999 *J. Leukoc. Biol.* 66:858
3. Sulahian TH, *et al.* 2000 *Cytokines* 12:1312
4. Fabrick BO, *et al.* 20