

**PE anti-human CD35**

**Catalog # / Size:** 2262015 / 25 tests  
2262020 / 100 tests

**Clone:** 9H3

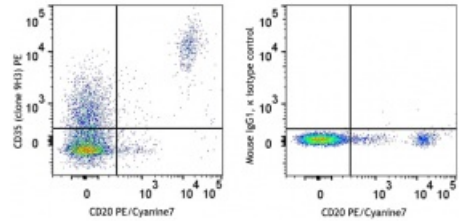
**Isotype:** Mouse IgG1, κ

**Reactivity:** Human

**Preparation:** The antibody was purified by affinity chromatography and conjugated with PE under optimal conditions.

**Formulation:** Phosphate-buffered solution, pH 7.2, containing 0.09% sodium azide and 0.2% (w/v) BSA (origin USA)

**Concentration:** Lot-specific



Human peripheral blood lymphocytes were stained with CD20 PE/Cyanine7 and CD35 (clone 9H3) PE (left) or mouse IgG1, κ PE isotype control (right).

**Applications:**

**Applications:** Flow Cytometry

**Recommended Usage:** Each lot of this antibody is quality control tested by immunofluorescent staining with flow cytometric analysis. For flow cytometric staining, the suggested use of this reagent is 5 μL per million cells in 100 μL staining volume or 5 μL per 100 μL of whole blood. It is recommended that the reagent be titrated for optimal performance for each application.

**Description:** CD35 is a type I single chain of glycoprotein, also known as C3b/C4b receptor, Complement Receptor type 1 or CR1. Four molecular weight allotypes (160kD, 190kD, 220kD, and 250kD) have been described. CD35 is expressed on granulocytes, monocytes, B cells, erythrocytes, and follicular dendritic cells, as well as subsets of NK and T cells. CD35 binds complement C3b, C4b, or iC3, and iC4, and plays important roles in both innate and adoptive immune response via mediating phagocytosis by granulocytes and monocytes. CD35 has also been reported to inhibit T-cell proliferation.

**Antigen References:** 1. Vorup-Jensen et al. 2018. *Front Immunol.* 9:2716.  
2. Ogembo et al. 2013. *Cell Rep.* 3(2):371-85.