

Brilliant Violet 605™ anti-human CD335 (NKp46)

Catalog # / Size: 2259625 / 25 tests
2259630 / 100 tests

Clone: 9E2

Isotype: Mouse IgG1, κ

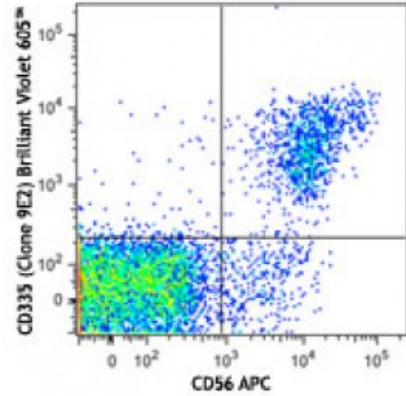
Immunogen: NKp46-Fc fusion protein

Reactivity: Human

Preparation: The antibody was purified by affinity chromatography and conjugated with Brilliant Violet 605™ under optimal conditions. The solution is free of unconjugated Brilliant Violet 605™ and unconjugated antibody.

Formulation: Phosphate-buffered solution, pH 7.2, containing 0.09% sodium azide and BSA (origin USA).

Concentration: Lot-specific

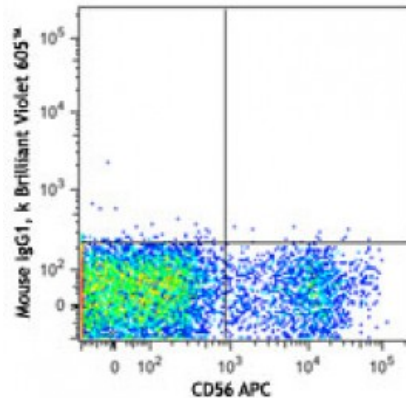


Human peripheral blood lymphocytes were stained with CD56 APC and CD335 (clone 9E2) Brilliant Violet 605™ (top) or mouse IgG1, κ Brilliant Violet 605™ isotype control (bottom).

Applications:

Applications: Flow Cytometry

Recommended Usage: Each lot of this antibody is quality control tested by immunofluorescent staining with flow cytometric analysis. For flow cytometric staining, the suggested use of this reagent is ≤5 microL per million cells or 5 microL per 100 microL of whole blood. It is recommended that the reagent be titrated for optimal performance for each application.



Brilliant Violet 605™ excites at 405 nm and emits at 603 nm. The bandpass filter 610/20 nm is recommended for detection, although filter optimization may be required depending on other fluorophores used. **Be sure to verify that your cytometer configuration and software setup are appropriate for detecting this channel.** Refer to your instrument manual or manufacturer for support. Brilliant Violet 605™ is a trademark of Sirigen Group Ltd.

This product is subject to proprietary rights of Sirigen Inc. and is made and sold under license from Sirigen Inc. The purchase of this product conveys to the buyer a non-transferable right to use the purchased product for research

purposes only. This product may not be resold or incorporated in any manner into another product for resale. Any use for therapeutics or diagnostics is strictly prohibited. This product is covered by U.S. Patent(s), pending patent applications and foreign equivalents.

Application Notes: Clone 9E2 has been shown to block NK activation through NKp46.⁶

Application References:

1. Nakajima H, *et al.* 2000. *Eur. J. Immunol.* 30:3309.
2. Kalberer CP, *et al.* 2003. *Blood* 102:127.
3. Chen Y, *et al.* 2007. *J. Immunol.* 179:2766.
4. Jarahian M, *et al.* 2009. *J. Virol.* 83:8108. [PubMed](#)
5. Correia DV, *et al.* 2011. *Blood* 118:992. (FC) [PubMed](#)
6. Achdout H. *et al.* 2010. *J. Virol.* 84:3993.

Description: CD335, also known as NKp46, is a member of the natural cytotoxicity receptor (NCR) family which triggers cytotoxicity in NK cells. CD335 is directly involved in target cell recognition and lysis, and is exclusively expressed on CD3⁻CD56⁺ NK cells, suggesting it is a universal marker for NK cells. NKp46, along with NKp30 and NKp44, is referred to as a natural cytotoxicity receptor (NCR) and plays a very important role in killing virus-infected tumor cells and MHC-class I-unprotected cells.

Antigen References:

1. Mandelboim O and Porgador A. 2001. *Int. J. Biochem. Cell Biol.* 33:1147.
2. Nakajima H, *et al.* 2000. *Eur. J. Immunol.* 30:3309.
3. Sivori S. 1999. *Eur. J. Immunol.* 29:1656.