

**PE/Cyanine5 anti-human CD1c**

**Catalog # / Size:** 2257770 / 100 tests  
2257765 / 25 tests

**Clone:** L161

**Isotype:** Mouse IgG1, κ

**Immunogen:** PSGL-1 transfected murine 300.19 pre B-cell line

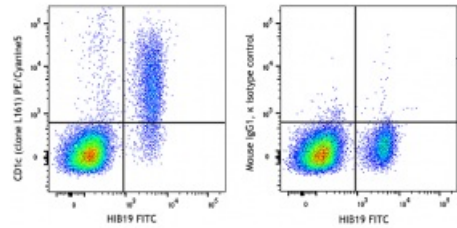
**Reactivity:** Human, Non-human primate, Other

**Preparation:** The antibody was purified by affinity chromatography and conjugated with PE/Cyanine5 under optimal conditions.

**Formulation:** Phosphate-buffered solution, pH 7.2, containing 0.09% sodium azide and 0.2% (w/v) BSA (origin USA)

**Workshop Number:** V T-CD01.18

**Concentration:** Lot-specific



Human peripheral blood lymphocytes were stained with HIB19 FITC and anti-human CD1c (clone L161) PE/Cyanine5 (left) or mouse IgG1, κ PE/Cyanine5 isotype control (right).

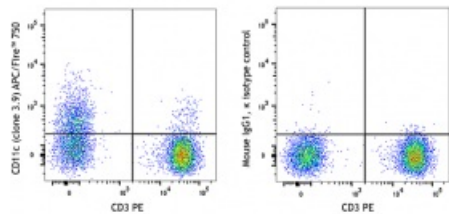
**Applications:**

**Applications:** Flow Cytometry

**Recommended Usage:** Each lot of this antibody is quality control tested by immunofluorescent staining with flow cytometric analysis. For flow cytometric staining, the suggested use of this reagent is 5 µL per million cells in 100 µL staining volume or 5 µL per 100 µL of whole blood. It is recommended that the reagent be titrated for optimal performance for each application.

**Application Notes:** Additional reported applications (for the relevant formats) include: immunohistochemical staining on frozen tissue<sup>4, 5</sup> and formalin-fixed paraffin-embedded immunohistochemical staining<sup>6</sup>.

- Application References:**
1. del C Salamone M, *et al.* 2001. *J Leukoc Biol.* 70:567.
  2. de Fraissinette A, *et al.* 1988. *Exp Hematol.* 16:764.
  3. Li D, *et al.* 2012. *J Exp Med.* 209:109. [PubMed](#)
  4. Xu C, *et al.* 2010. *Am J Hematol.* 85:539 (IHC-F)
  5. Gerlini G, *et al.* 2001. *J Invest Dermatol.* 117:576 (IHC-F)
  6. Poposki J, *et al.* 2016. *Clin Exp Allergy* 45:384 (IHC-P) [PubMed](#)



Human peripheral blood lymphocytes were stained with PE anti-human CD3 and APC/Fire™ 750 anti-human CD11c (clone 3.9) (left) or mouse IgG1, κ APC/Fire™ 750 isotype control (right).

**Description:** CD1c, also known as R7 or M241, is a 43 kD member of the five CD1 antigens (CD1a-e) in humans. The CD1 molecules are type I glycoprotein with structural similarities to MHC class I and are non-covalently associated with  $\beta_2$ -microglobulin, belonging to the Ig superfamily. CD1c is expressed on cortical thymocytes, Langerhans cells, dendritic cells, and a subset of B cells. It has been reported that CD1c is also expressed on mature T cells in a tightly regulated manner. CD1c is involved in antigen-presentation of glycolipids. It may also act in T cells as an immune regulatory molecule.

**Antigen**  
**References:**

1. Fainboim LM and del C. Salamone. 2002. *J. Biol. Reg. Homeos. Ag.* 16:125.
2. M. del Salamone C, *et al.* 2001. *J. Leukocyte Biol.* 70:567.
3. Zola H, *et al.* Eds. 2007. *Leukocyte and Stromal Cell Molecules: The CD Markers.* P42.