

Brilliant Violet 650™ anti-human CD1c

Catalog # / Size: 2257710 / 100 tests
2257705 / 25 tests

Clone: L161

Isotype: Mouse IgG1, κ

Immunogen: Human CD200R full length fusion protein

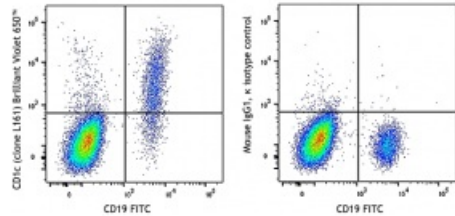
Reactivity: Human, Non-human primate, Other

Preparation: The antibody was purified by affinity chromatography and conjugated with Brilliant Violet 650™ under optimal conditions. The solution is free of unconjugated Brilliant Violet 650™ and unconjugated antibody.

Formulation: Phosphate-buffered solution, pH 7.2, containing 0.09% sodium azide and BSA (origin USA).

Workshop Number: V T-CD01.18

Concentration: Lot-specific



Human peripheral blood lymphocytes were stained with CD19 FITC and CD1c (clone L161) Brilliant Violet 650™ (left) or, Mouse IgG1, κ Brilliant Violet 650™ isotype control (right).

Applications:

Applications: Flow Cytometry

Recommended Usage: Each lot of this antibody is quality control tested by immunofluorescent staining with flow cytometric analysis. For flow cytometric staining, the suggested use of this reagent is 5 µl per million cells in 100 µl staining volume or 5 µl per 100 µl of whole blood.

Brilliant Violet 650™ excites at 405 nm and emits at 645 nm. The bandpass filter 660/20 nm is recommended for detection, although filter optimization may be required depending on other fluorophores used. Be sure to verify that your cytometer configuration and software setup are appropriate for detecting this channel. Refer to your instrument manual or manufacturer for support. Brilliant Violet 650™ is a trademark of Sirigen Group Ltd.

This product is subject to proprietary rights of Sirigen Inc. and is made and sold under license from Sirigen Inc. The purchase of this product conveys to the buyer a non-transferable right to use the purchased product for research purposes only. This product may not be resold or incorporated in any manner into another product for resale. Any use for therapeutics or diagnostics is strictly prohibited. This product is covered by U.S. Patent(s), pending patent applications and foreign equivalents.

Application Notes: Additional reported applications (for the relevant formats) include: immunocytochemical staining¹.

- Application References:**
1. del C Salamone M, et al. 2001. *J Leukoc Biol.* 70:567.
 2. de Fraissinette A, et al. 1988. *Exp Hematol.* 16:764.
 3. Li D, et al. 2012. *J Exp Med.* 209:109. [PubMed](#)
 4. Xu C, et al. 2010. *Am J Hematol.* 85:539 (IHC-F)
 5. Gerlini G, et al. 2001. *J Invest Dermatol.* 117:576 (IHC-F)
 6. Poposki J, et al. 2016. *Clin Exp Allergy* 45:384 (IHC-P) [PubMed](#)

Description: CD1c, also known as R7 or M241, is a 43 kD member of the five CD1 antigens (CD1a-e) in humans. The CD1 molecules are type I glycoprotein with structural similarities to MHC class I and are non-covalently associated with β_2 -microglobulin, belonging to the Ig superfamily. CD1c is expressed on cortical thymocytes, Langerhans cells, dendritic cells, and a subset of B cells. It has been reported that CD1c is also expressed on mature T cells in a tightly regulated manner. CD1c is involved in antigen-presentation of glycolipids. It may also act in T cells as an immune regulatory molecule.

Antigen
References:

1. Fainboim LM and del C. Salamone. 2002. *J. Biol. Reg. Homeos. Ag.* 16:125.
2. M. del Salamone C, *et al.* 2001. *J. Leukocyte Biol.* 70:567.
3. Zola H, *et al.* Eds. 2007. *Leukocyte and Stromal Cell Molecules: The CD Markers.* P42.