

**Pacific Blue™ anti-human CD1c**

**Catalog # / Size:** 2257540 / 100 µg  
2257535 / 25 µg

**Clone:** L161

**Isotype:** Mouse IgG1, κ

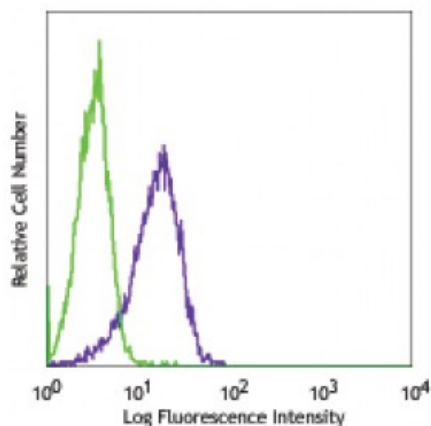
**Reactivity:** Human

**Preparation:** The antibody was purified by affinity chromatography, and conjugated with Pacific Blue™ under optimal conditions. The solution is free of unconjugated Pacific Blue™.

**Formulation:** Phosphate-buffered solution, pH 7.2, containing 0.09% sodium azide.

**Workshop Number:** V T-CD01.18

**Concentration:** 0.5



Human T lymphoblastic leukemia cell line, Molt-4, stained with L161 Pacific Blue™

**Applications:**

**Applications:** Flow Cytometry

**Recommended Usage:** Each lot of this antibody is quality control tested by immunofluorescent staining with flow cytometric analysis. The suggested use of this reagent is ≤ 2.0 microg per 10<sup>6</sup> cells in 100 microL volume or 100 microL of whole blood. It is highly recommended that the reagent be titrated for optimal performance for each application.

\* Pacific Blue™ has a maximum emission of 455 nm when it is excited at 405 nm. Prior to using Pacific Blue™ conjugate for flow cytometric analysis, please verify your flow cytometer's capability of exciting and detecting the fluorochrome.

**Application Notes:** Additional reported applications (for the relevant formats) include: immunocytochemical staining<sup>1</sup>.

**Application References:**

1. M. del Salamone C, *et al.* 2001. *J. Leukoc. Biol.* 70:567.
2. de Fraissinette A, *et al.* 1988. *Exp. Hematol.* 16:764.
2. Li D, *et al.* 2012. *J. Exp Med.* 209:109. [PubMed](#)

**Description:** CD1c, also known as R7 or M241, is a 43 kD member of the five CD1 antigens (CD1a-e) in humans. The CD1 molecules are type I glycoprotein with structural similarities to MHC class I and are non-covalently associated with β<sub>2</sub>-microglobulin, belonging to the Ig superfamily. CD1c is expressed on cortical thymocytes, Langerhans cells, dendritic cells, and a subset of B cells. It has been reported that CD1c is also expressed on mature T cells in a tightly regulated manner. CD1c is involved in antigen-presentation of glycolipids. It may also act in T cells as an immune regulatory molecule.

**Antigen References:**

1. Fainboim LM and del C. Salamone. 2002. *J. Biol. Reg. Homeos. Ag.* 16:125.
2. M. del Salamone C, *et al.* 2001. *J. Leukocyte Biol.* 70:567.
3. Zola H, *et al.* Eds. 2007. *Leukocyte and Stromal Cell Molecules:Th*