

PE/Dazzle™ 594 anti-human TCR Vδ2

Catalog # / Size: 2257130 / 100 tests
2257125 / 25 tests

Clone: B6

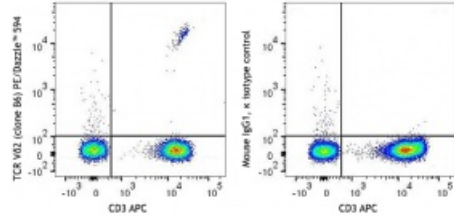
Isotype: Mouse IgG1, κ

Reactivity: Human, Non-human primate, Other

Preparation: The antibody was purified by affinity chromatography and conjugated with PE/Dazzle™ 594 under optimal conditions. The solution is free of unconjugated PE/Dazzle™ 594 and unconjugated antibody.

Formulation: Phosphate-buffered solution, pH 7.2, containing 0.09% sodium azide and 0.2% (w/v) BSA (origin USA).

Concentration: Lot-specific



Human peripheral blood lymphocytes were stained with CD3 APC and TCR Vδ2 PE/Dazzle™ 594 (left) or mouse IgG1

Applications:

Applications: Flow Cytometry

Recommended Usage: Each lot of this antibody is quality control tested by immunofluorescent staining with flow cytometric analysis. For flow cytometric staining, the suggested use of this reagent is 5 µl per million cells in 100 µl staining volume or 5 µl per 100 µl of whole blood. It is recommended that the reagent be titrated for optimal performance for each application.

* PE/Dazzle™ 594 has a maximum excitation of 566 nm and a maximum emission of 610 nm.

- Application References:**
1. Scotet E, *et al.* 2005. *Immunity* 22:71.
 2. Rincon-Orozco B, *et al.* 2005. *J. Immunol.* 175:2144.

Description: The Vδ2 TCR is a variant of the TCR δ chain expressed on a subset of γ/δ T cells. Vγ9Vδ2 T lymphocytes, a major γ/δ T cell subset in humans, recognize phosphoantigens, certain tumor cells, and cells treated with aminobisphosphonates. This cell population displays cytolytic activity against various tumor cells. The γ/δ TCR is an heterodimeric TCR complex composed of covalently bound γ and δ chains involved in antigen recognition and the non-covalently associated monomorphic proteins CD3δ, γ, ε, and ζ chains.

- Antigen References:**
1. Scotet E, *et al.* 2005. *Immunity* 22:71.
 2. Rincon-Orozco B, *et al.* 2005. *J. Immunol.* 175:2144.