

APC/Fire™ 750 anti-human TCR Vγ9

Catalog # / Size: 2256580 / 100 tests
2256575 / 25 tests

Clone: B3

Isotype: Mouse IgG1, κ

Immunogen: Concentrated supernatant from PMA-activated human peripheral blood leukocytes

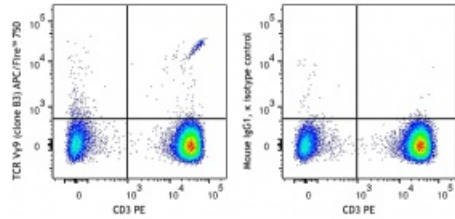
Reactivity: Human, Non-human primate

Preparation: The antibody was purified by affinity chromatography and conjugated with APC/Fire™ 750 under optimal conditions.

Formulation: Phosphate-buffered solution, pH 7.2, containing 0.09% sodium azide and 0.2% (w/v) BSA (origin USA).

Workshop Number: V CD08.10

Concentration: Lot-specific



Human peripheral blood lymphocytes were stained with CD3 (clone UCHT1) PE and anti-human TCR Vγ9 (clone B3) APC/Fire™ 750 (left) or mouse IgG1, κ APC/Fire™ 750 isotype control (right).

Applications:

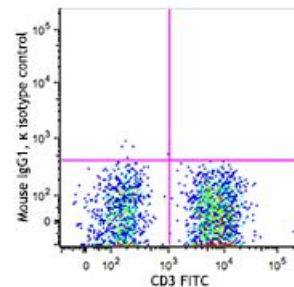
Applications: Flow Cytometry

Recommended Usage: Each lot of this antibody is quality control tested by immunofluorescent staining with flow cytometric analysis. For flow cytometric staining, the suggested use of this reagent is 5 μl per million cells in 100 μl staining volume or 5 μl per 100 μl of whole blood.

* APC/Fire™ 750 has a maximum excitation of 650 nm and a maximum emission of 787 nm.

Application Notes: Clone HIT8a recognizes the alpha chain of CD8⁵. It does not block the binding of RPA-T8 antibody to CD8a.

Additional reported applications of this antibody (for the relevant formats) include: immunohistochemical staining of acetone-fixed frozen tissue sections^{5,6}. This clone was tested in-house and does not work on formalin fixed paraffin-embedded (FFPE) tissue.



- Application References:**
1. Van Rhijn I, *et al.* 2003. *Intl. Immunol.* 15:373.
 2. Yoshino N, *et al.* 2000. *Exp. Anim. (Tokyo)* 49:97. (FC)

Description: The V γ 9 TCR is a variant of the TCR γ chain expressed on a subset of γ/δ T cells. V γ 9V δ 2 T lymphocytes, a major γ/δ T cell subset in humans, recognize phosphoantigens, certain tumor cells, and cells treated with aminobisphosphonates. This cell population displays cytolytic activity against various tumor cells. The γ/δ TCR is a heterodimeric TCR complex composed of covalently bound γ and δ chains involved in antigen recognition and the non-covalently associated monomorphic proteins CD3 δ , γ , ϵ , and ζ chains.

Antigen 1. Scotet E, *et al.* 2005. *Immunity* 22:71
References: 2. Rincon-Orozco B, *et al.* 2005. *J. Immunol.* 175:2144