

PE/Cy7 anti-human/mouse CXCR7

Catalog # / 2255575 / 25 tests
Size: 2255580 / 100 tests

Clone: 8F11-M16

Isotype: Mouse IgG2b, κ

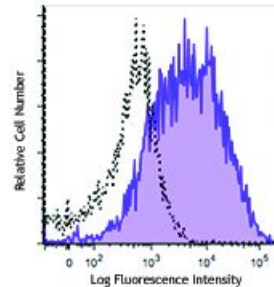
Immunogen: Human CXCR7 transfectant

Reactivity: Human, Mouse

Preparation: The antibody was purified by affinity chromatography and conjugated with PE/Cy7 under optimal conditions. The solution is free of unconjugated PE/Cy7 and unconjugated antibody.

Formulation: Phosphate-buffered solution, pH 7.2, containing 0.09% sodium azide and 0.2% (w/v) BSA (origin USA).

Concentration: Lot-specific



CXCR7 transfectant L1.2 cells were stained with CXCR7 (clone 8F11-M16) PE/Cy7 (filled histogram) or mouse IgG2b, κ PE/Cy7 isotype control (open histogram).

Applications:

Applications: Flow Cytometry

Recommended Usage: Each lot of this antibody is quality control tested by immunofluorescent staining with flow cytometric analysis. For flow cytometric staining, the suggested use of this reagent is 5 microL per million cells or 5 microL per 100 microL of whole blood. It is recommended that the reagent be titrated for optimal performance for each application.

This product is subject to proprietary rights of Sirigen Inc. and is made and sold under license from Sirigen Inc. The purchase of this product conveys to the buyer a non-transferable right to use the purchased product for research purposes only. This product may not be resold or incorporated in any manner into another product for resale. Any use for therapeutics or diagnostics is strictly prohibited. This product is covered by U.S. Patent(s), pending patent applications and foreign equivalents.

Application Notes: Additional reported applications (for the relevant formats) include: Intracellular staining for flow cytometry.²

Application References:

1. Soehnlein O, *et al.* 2013. *EMBO Mol. Med.* 5:471. (FC) [PubMed](#)
2. Saad ST, *et al.* 2014. *PLoS One* 9(1). (ICFC) [PubMed](#)
3. Balabanian K, *et al.* 2012. *J. Transl. Med.* 10:251. (FC) [PubMed](#)

Description: CXCR7, also known as RDC1, belongs to a subgroup of C-X-C chemokine receptors, which are part of a large protein family of G protein-coupled receptors (GPCR). CXCR7 binds with high-affinity to CXCL12/SDF-1 and CXCL11/I-TAC, which regulates the trafficking and activation of leukocytes. It is also a co-receptor for the entry of HIV-1. Binding of ligand to CXCR7 induces proliferation and migration of immature neurons, glia and their precursors. CXCR7 expression occurs on a wide variety of tissues and cells including monocytes, B cells, T cells and mature dendritic cells. Surface expression of CXCR7 was also reported to be on tumor cells, activated endothelial cells, fetal liver cells, and other cell types.

- Antigen** 1. Burns JM, et al. 2006. *J. Exp. Med.* 203:2201.
References: 2. Infantino S, et al. 2006. *J. Immunol.* 176:2197.