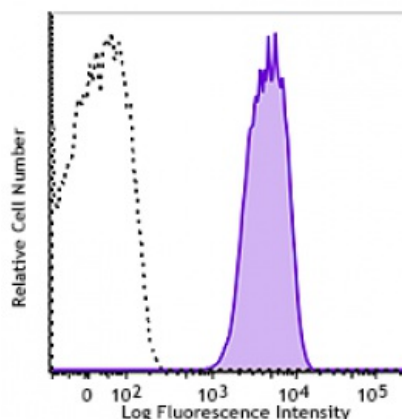


PerCP/Cy5.5 anti-human CD50 (ICAM-3)

Catalog # / Size:	2250085 / 25 tests 2250090 / 100 tests
Clone:	CBR-IC3/1
Isotype:	Mouse IgG1, κ
Immunogen:	SKW3 cells
Reactivity:	Human, Mouse, Non-human primate, Other, Rat
Preparation:	The antibody was purified by affinity chromatography and conjugated with PerCP/Cy5.5 under optimal conditions. The solution is free of unconjugated PerCP/Cy5.5 and unconjugated antibody.
Formulation:	Phosphate-buffered solution, pH 7.2, containing 0.09% sodium azide and 0.2% (w/v) BSA (origin USA).
Concentration:	Lot-specific

Applications:

Applications:	Flow Cytometry
Recommended Usage:	Each lot of this antibody is quality control tested by immunofluorescent staining with flow cytometric analysis. For flow cytometric staining, the suggested use of this reagent is 5 μ l per million cells or 5 μ l per 100 μ l of whole blood. It is recommended that the reagent be titrated for optimal performance for each application.



Application Notes:	* PerCP/Cy5.5 has a maximum absorption of 482 nm and a maximum emission of 690 nm. Additional reported applications include: immunoprecipitation ¹ and blocking ¹⁻³ .
---------------------------	--

Human peripheral blood lymphocytes were stained with anti-human CD50 (clone CBR-IC3/1) PerCP/Cy5.5 (closed histogram) or mouse IgG1

Application References:	1. Valent P, <i>et al.</i> 2001. <i>Immunol. Rev.</i> 179:74.
--------------------------------	---

Description: CD50 is a 120-140 kD type I membrane protein also known as intercellular adhesion molecule 3 (ICAM-3). It is broadly expressed on leukocytes, endothelial cells, and Langerhans cells. CD50 is a member of the Ig superfamily. It provides costimulatory signal for T cells and regulates cell adhesion through interaction with LFA-1 (CD11a/CD18, $\alpha_L\beta_2$) integrin.

Antigen References:	1. Valent P, <i>et al.</i> 2001. <i>Immunol. Rev.</i> 179:74.
----------------------------	---