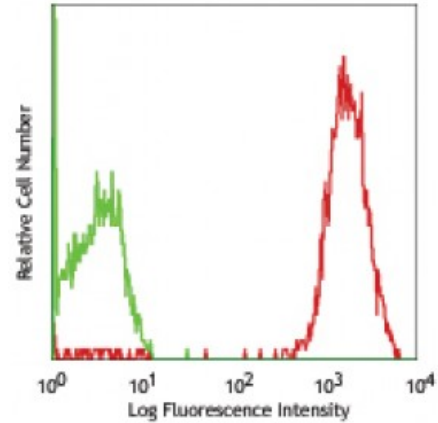


**PE anti-human CD50 (ICAM-3)**

**Catalog # / Size:** 2250025 / 25 tests  
**Clone:** CBR-IC3/1  
**Isotype:** Mouse IgG1,  $\kappa$   
**Immunogen:** SKW3 cells  
**Reactivity:** Human  
**Preparation:** The antibody was purified by affinity chromatography, and conjugated with PE under optimal conditions. The solution is free of unconjugated PE and unconjugated antibody.  
**Formulation:** Phosphate-buffered solution, pH 7.2, containing 0.09% sodium azide and 0.2% (w/v) BSA (origin USA).  
**Concentration:** Lot-specific



Human peripheral blood lymphocytes stained with CBR-IC3/1 PE

**Applications:**

**Applications:** Flow Cytometry  
**Recommended Usage:** Each lot of this antibody is quality control tested by immunofluorescent staining with flow cytometric analysis. **Test size products are transitioning from 20 microL to 5 microL per test.** Please check your vial or your CoA to find the suggested use of this reagent per million cells in 100 microL staining volume or per 100 microL of whole blood. It is recommended that the reagent be titrated for optimal performance for each application.  
**Application Notes:** Additional reported applications include: immunoprecipitation<sup>1</sup> and blocking<sup>1-3</sup>.  
**Application References:** 1. deFougerolles AR and Springer TA, *et al.* 1992. *J. Exp. Med.* 175:185. (IP, Block)  
 2. Geijtenbeek T, *et al.* 2000. *Cell* 100:575. (Block)  
 3. Giannoni E, *et al.* 2003. *J Biol. Chem.* 278:36763. (Block)

**Description:** CD50 is a 120-140 kD type I membrane protein also known as intercellular adhesion molecule 3 (ICAM-3). It is broadly expressed on leukocytes, endothelial cells, and Langerhans cells. CD50 is a member of the Ig superfamily. It provides costimulatory signal for T cells and regulates cell adhesion through interaction with LFA-1 (CD11a/CD18,  $\alpha_L/\beta_2$ ) integrin.

**Antigen References:** 1. Valent P, *et al.* 2001. *Immunol. Rev.* 179:74.