

**Brilliant Violet 421™ anti-human CD279 (PD-1)**

**Catalog # / Size:** 2249595 / 25 tests  
2249600 / 100 tests

**Clone:** EH12.2H7

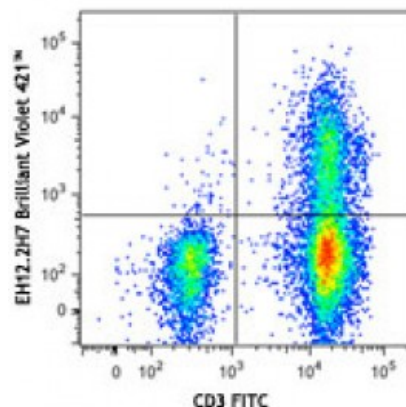
**Isotype:** Mouse IgG1, κ

**Reactivity:** Human

**Preparation:** The antibody was purified by affinity chromatography and conjugated with Brilliant Violet 421™ under optimal conditions. The solution is free of unconjugated Brilliant Violet 421™ and unconjugated antibody.

**Formulation:** Phosphate-buffered solution, pH 7.2, containing 0.09% sodium azide and BSA (origin USA).

**Concentration:** Lot-specific

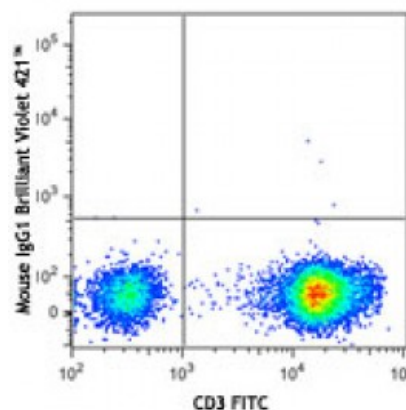


Human peripheral blood lymphocytes were stained with CD3 FITC and CD279 (clone EH12.2H7) Brilliant Violet 421™ (top) or mouse IgG1, κ Brilliant Violet 421™ isotype control (bottom).

**Applications:**

**Applications:** Flow Cytometry

**Recommended Usage:** Each lot of this antibody is quality control tested by immunofluorescent staining with flow cytometric analysis. For flow cytometric staining, the suggested use of this reagent is ≤5 microL per million cells or 5 microL per 100 microL of whole blood. It is recommended that the reagent be titrated for optimal performance for each application.



Brilliant Violet 421™ excites at 405 nm and emits at 421 nm. The standard bandpass filter 450/50 nm is recommended for detection. Brilliant Violet 421™ is a trademark of Sirigen Group Ltd.

This product is subject to proprietary rights of Sirigen Inc. and is made and sold under license from Sirigen Inc. The purchase of this product conveys to the buyer a non-transferable right to use the purchased product for research purposes only. This product may not be resold or incorporated in any manner into another product for resale. Any use for therapeutics or diagnostics is strictly prohibited. This product is covered by U.S. Patent(s), pending patent applications and foreign equivalents.

**Application Notes:** Additional reported applications (for the relevant formats) include: blocking of ligand binding<sup>1</sup> - <sup>3</sup> and immunohistochemical staining of paraformaldehyde fixed frozen sections<sup>13</sup>. The LEAF™ purified antibody (Endotoxin <0.1 EU/μg, Azide-Free, 0.2 μm filtered) is recommended for functional assays (Cat. No. 329911 and 329912). For highly sensitive assays, we recommend Ultra-LEAF™ purified antibody (Cat. No. 329926) with a lower endotoxin limit than standard LEAF™ purified antibodies (Endotoxin <0.01 EU/microg).

- Application References:**
1. Dorfman DM, *et al.* 2006 *Am. J. Surg. Pathol.* 30:802. (FA)
  2. Radziejewicz H, *et al.* 2007. *J. Virol.* 81:2545. (FA)
  3. Velu V, *et al.* 2007. *J. Virol.* 81:5819. (FA)
  4. Zahn RC, *et al.* 2008. *J. Virol.* 82:11577. [PubMed](#)
  5. Chang WS, *et al.* 2008. *J. Immunol.* 181:6707. (FC) [PubMed](#)
  6. Nakamoto N, *et al.* 2009. *PLoS Pathog.* 5:e1000313. (FA)
  7. Jones RB, *et al.* 2009. *J. Virol.* 83:8722. (FC) [PubMed](#)
  8. Vojnov L, *et al.* 2010. *J. Virol.* 84:753. (FC) [PubMed](#)
  9. Radziejewicz H, *et al.* 2010. *J. Immunol.* 184:2410. (FC) [PubMed](#)
  10. Monteriro P, *et al.* 2011. *J. Immunol.* 186:4618. [PubMed](#)
  11. Conrad J, *et al.* 2011. *J. Immunol.* 186:6871. [PubMed](#)
  12. Salisch NC, *et al.* 2010. *J. Immunol.* 184:476. (Rhesus reactivity)
  13. Li H and Pauza CD. 2015. *Eur. J. Immunol.* 45:298. (IHC)
- 

**Description:** Programmed cell death 1 (PD-1), also known as CD279, is a 55 kD member of the immunoglobulin superfamily. CD279 contains the immunoreceptor tyrosine-based inhibitory motif (ITIM) in the cytoplasmic region and plays a key role in peripheral tolerance and autoimmune disease. CD279 is expressed predominantly on activated T cells, B cells, and myeloid cells. PD-L1 (B7-H1) and PD-L2 (B7-DC) are ligands of CD279 (PD-1) and are members of the B7 gene family. Evidence suggests overlapping functions for these two PD-1 ligands and their constitutive expression on some normal tissues and upregulation on activated antigen-presenting cells. Interaction of CD279 ligands results in inhibition of T cell proliferation and cytokine secretion.