

APC/Fire™ 750 anti-human CD162

Catalog # / 2244065 / 25 tests
Size: 2244070 / 100 tests

Clone: KPL-1

Isotype: Mouse IgG1, κ

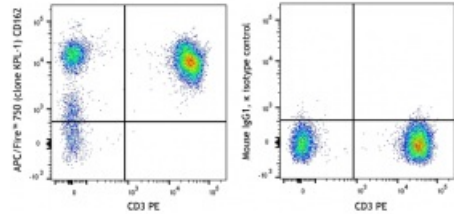
Immunogen: PSGL-1 transfected murine 300.19 pre B-cell line

Reactivity: Human, Non-human primate, Other

Preparation: The antibody was purified by affinity chromatography and conjugated with APC/Fire™ 750 under optimal conditions.

Formulation: Phosphate-buffered solution, pH 7.2, containing 0.09% sodium azide and 0.2% (w/v) BSA (origin USA).

Concentration: Lot-specific



Human peripheral lymphocytes were stained with CD3 PE and CD162 (clone KPL-1) APC/Fire™ 750 (left) or mouse IgG1, κ APC/Fire™ 750 isotype control (right) in the presence of True-Stain Monocyte Blocker™ (Cat. No. 426103).

Applications:

Applications: Flow Cytometry

Recommended Usage: Each lot of this antibody is quality control tested by immunofluorescent staining with flow cytometric analysis. For flow cytometric staining, the suggested use of this reagent is 5 µl per million cells in 100 µl staining volume or 5 µl per 100 µl of whole blood.

* APC/Fire™ 750 has a maximum excitation of 650 nm and a maximum emission of 787 nm.

Application Notes: Clone KPL-1 is reported to recognize the tyrosine sulfation consensus motif of PSGL-1¹. Additional reported applications (for the relevant formats) include: Western Blot¹, immunoprecipitation², immunohistochemical staining of acetone-fixed frozen tissue sections and formalin-fixed paraffin embedded tissue sections¹, blocks the recognition of PSGL-1 with P- and L-selectin¹.

- Application References:**
1. Snapp KR, et al. 1998. *Blood* 91:154.
 2. Snapp KR, et al. 1998. *J. Cell Biol.* 142:263.
 3. Yoshino N, et al. 2000. *Exp. Anim. (Tokyo)* 49:97. (FC)
 4. Miyamura K, et al. 2011. *J. Gen. Virol.* 92:287. [PubMed](#)
 5. Cheng Q, et al. 2012. *Lupus.* 21:632. [PubMed](#).

Description: CD162, also known as p-selectin glycoprotein ligand-1 (PSGL-1), is a 120 - 220 kD, mucin-like type I transmembrane glycoprotein. CD162 binds to CD62P (P-Selectin), CD62E (E-Selectin) and CD62L (L-Selectin). The interactions between P-selectin and P-selectin glycoprotein ligand-1 (PSGL-1) mediate the earliest "rolling" of leukocytes on the luminal surface of activated endothelium, and the interaction between leukocytes and activated platelets or other leukocytes found at sites of inflammation. CD162 is expressed on neutrophils, monocytes, and most lymphocytes including NK and T cells but PSGL-1 stains B cells at significantly lower levels than other cell types.

Antigen
References: 1. Snapp KR, *et al.* 1998. *Blood* 91:154.