

**APC anti-human CD162**

**Catalog # / Size:** 2244060 / 100 tests  
2244055 / 25 tests

**Clone:** KPL-1

**Isotype:** Mouse IgG1, κ

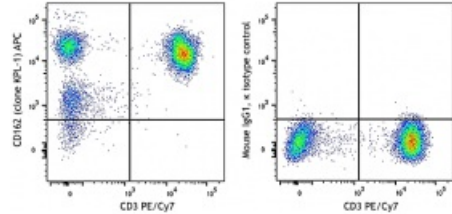
**Immunogen:** PSGL-1 transfected murine 300.19 pre B-cell line

**Reactivity:** Human, Non-human primate, Other

**Preparation:** The antibody was purified by affinity chromatography and conjugated with APC under optimal conditions. The solution is free of unconjugated APC and unconjugated antibody.

**Formulation:** Phosphate-buffered solution, pH 7.2, containing 0.09% sodium azide and 0.2% (w/v) BSA (origin USA).

**Concentration:** Lot-specific



Human peripheral lymphocytes were stained with CD3 PE/Cy7 and CD162 (clone KPL-1) APC (left) or Mouse IgG1, κ APC isotype control (right).

**Applications:**

**Applications:** Flow Cytometry

**Recommended Usage:** Each lot of this antibody is quality control tested by immunofluorescent staining with flow cytometric analysis. For flow cytometric staining, the suggested use of this reagent is 5 µl per million cells or 5 µl per 100 µl of whole blood. It is recommended that the reagent be titrated for optimal performance for each application.

**Application Notes:** Clone KPL-1 is reported to recognize the tyrosine sulfation consensus motif of PSGL-1<sup>1</sup>. Additional reported applications (for the relevant formats) include: Western Blot<sup>1</sup>, immunoprecipitation<sup>2</sup>, immunohistochemical staining of acetone-fixed frozen tissue sections and formalin-fixed paraffin embedded tissue sections<sup>1</sup>, blocks the recognition of PSGL-1 with P- and L-selectin<sup>1</sup>.

**Application References:** 1. Snapp KR, *et al.* 1998. *Blood* 91:154.

**Description:** CD162, also known as p-selectin glycoprotein ligand-1 (PSGL-1), is a 120 - 220 kD, mucin-like type I transmembrane glycoprotein. CD162 binds to CD62P (P-Selectin), CD62E (E-Selectin) and CD62L (L-Selectin). The interactions between P-selectin and P-selectin glycoprotein ligand-1 (PSGL-1) mediate the earliest "rolling" of leukocytes on the luminal surface of activated endothelium, and the interaction between leukocytes and activated platelets or other leukocytes found at sites of inflammation. CD162 is expressed on neutrophils, monocytes, and most lymphocytes including NK and T cells but PSGL-1 stains B cells at significantly lower levels than other cell types.

**Antigen References:** 1. Snapp KR, *et al.* 1998. *Blood* 91:154.