

PE anti-human CD162

Catalog # / Size: 2244025 / 25 tests
2244030 / 100 tests

Clone: KPL-1

Isotype: Mouse IgG1, κ

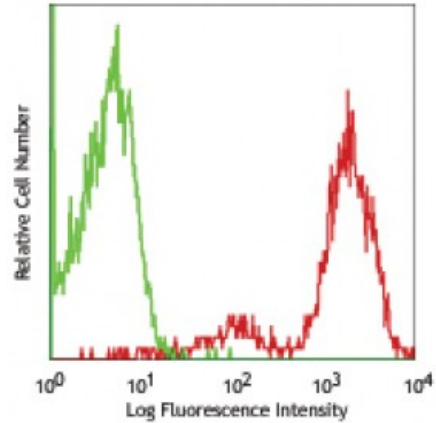
Immunogen: PSGL-1 transfected murine 300.19 pre B-cell line

Reactivity: Human

Preparation: The antibody was purified by affinity chromatography, and conjugated with PE under optimal conditions. The solution is free of unconjugated PE and unconjugated antibody.

Formulation: Phosphate-buffered solution, pH 7.2, containing 0.09% sodium azide and 0.2% (w/v) BSA (origin USA).

Concentration: Lot-specific



Human peripheral blood lymphocytes stained with KPL-1 PE

Applications:

Applications: Flow Cytometry

Recommended Usage: Each lot of this antibody is quality control tested by immunofluorescent staining with flow cytometric analysis. **Test size products are transitioning from 20 microL to 5 microL per test.** Please check your vial or your CoA to find the suggested use of this reagent per million cells in 100 microL staining volume or per 100 microL of whole blood. It is recommended that the reagent be titrated for optimal performance for each application.

Application Notes: Clone KPL-1 is reported to recognize the tyrosine sulfation consensus motif of PSGL-11. Additional reported applications (for the relevant formats) include: Western Blot1, immunoprecipitation2, immunohistochemical staining of acetone-fixed frozen tissue sections and formalin-fixed paraffin embedded tissue sections1, blocks the recognition of PSGL-1 with P- and L-selectin1.

- Application References:**
1. Snapp KR, *et al.* 1998. *Blood* 91:154.
 2. Snapp KR, *et al.* 1998. *J. Cell Biol.* 142:263.
 3. Yoshino N, *et al.* 2000. *Exp. Anim. (Tokyo)* 49:97. (FC)
 4. Miyamura K, *et al.* 2011. *J. Gen. Virol.* 92:287. [PubMed](#)
 5. Cheng Q, *et al.* 2012. *Lupus.* 21:632. [PubMed](#).

Description: CD162, also known as p-selectin glycoprotein ligand-1 (PSGL-1), is a 120 - 220 kD, mucin-like type I transmembrane glycoprotein. CD162 binds to CD62P (P-Selectin), CD62E (E-Selectin) and CD62L (L-Selectin). The interactions between P-selectin and P-selectin glycoprotein ligand-1 (PSGL-1) mediate the earliest "rolling" of leukocytes on the luminal surface of activated endothelium, and the interaction between leukocytes and activated platelets or other leukocytes found at sites of inflammation. CD162 is expressed on neutrophils, monocytes, and most lymphocytes including NK and T cells but PSGL-1 stains B cells at significantly lower levels than other cell types.

Antigen References:

1. Snapp KR, *et al.* 1998. *Blood* 91:154.