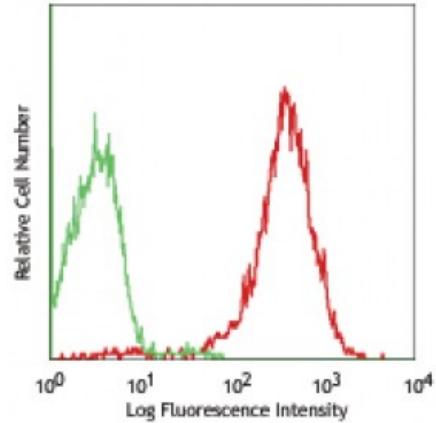


Alexa Fluor® 647 anti-human CD49a

Catalog # / Size: 2241550 / 100 tests
Clone: TS2/7
Isotype: Mouse IgG1, κ
Immunogen: Human CTL line
Reactivity: Human
Preparation: The antibody was purified by affinity chromatography, and conjugated with Alexa Fluor® 647 under optimal conditions.
Formulation: Phosphate-buffered solution, pH 7.2, containing 0.09% sodium azide and 0.2% (w/v) BSA (origin USA).
Concentration: Lot-specific



Human cervical cancer cell line, Hela, stained with TS2/7 Alexa Fluor® 647

Applications:

Applications: Flow Cytometry
Recommended Usage: Each lot of this antibody is quality control tested by immunofluorescent staining with flow cytometric analysis. For flow cytometric staining, the suggested use of this reagent is 5 microL per million cells or 5 microL per 100 microL of whole blood. It is recommended that the reagent be titrated for optimal performance for each application.
 * Alexa Fluor® 647 has a maximum emission of 668 nm when it is excited at 633nm / 635nm.
Application Notes: Additional reported applications include: immunoprecipitation (1) and immunohistochemical staining (1) of acetone-fixed frozen tissue sections
Application References: 1. Hemler ME, *et al.* 1984. *J. Immunol.* 132:3011
 2. Hemler ME, *et al.* 1985. *J. Biol. Chem.* 260:15246

Description: CD49a is a 200 kD type I transmembrane glycoprotein also known as α₁ integrin, VLA-1 α chain, or Integrin α₁. It associates with CD29 (β₁ integrin) to form VLA-1 complex, a collagen IV and alminin-1 receptor. It is expressed on activated T cells, monocytes, NK cells, smooth muscle cells, neuronal cells, fibroblasts, and mesenchymal cells. CD49a is an adhesion molecule and is involved in the regulation of leukocyte migration, T cell proliferation, and cytokine production.
Antigen References: 1. Zola H, *et al.* Eds. 2007. *Leukocyte and Stromal Cell Molecules: The CD Markers.* Wiley-Liss Press. p122
 2. Boiret N, *et al.* 2005. *Exp. Hematol.* 33:219