

**Alexa Fluor® 700 anti-human HLA-DR**

**Catalog # / Size:** 2235065 / 25 µg  
2235070 / 100 µg

**Clone:** LN3

**Isotype:** Mouse IgG2b, κ

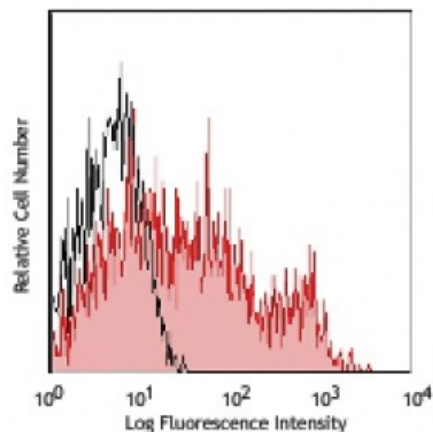
**Immunogen:** human PBL

**Reactivity:** Human

**Preparation:** The antibody was purified by affinity chromatography, and conjugated with Alexa Fluor® 700 under optimal conditions.

**Formulation:** Phosphate-buffered solution, pH 7.2, containing 0.09% sodium azide.

**Concentration:** 0.5



Human peripheral blood lymphocytes stained with LN3 Alexa Fluor® 700

**Applications:**

**Applications:** Flow Cytometry

**Recommended Usage:** Each lot of this antibody is quality control tested by immunofluorescent staining with flow cytometric analysis. The suggested use of this reagent is ≤2.0 microg per million cells in 100 microL volume. It is highly recommended that the reagent be titrated for optimal performance for each application.

\* Alexa Fluor® 700 has a maximum emission of 719 nm when it is excited at 633 nm / 635 nm. Prior to using Alexa Fluor® 700 conjugate for flow cytometric analysis, please verify your flow cytometer's capability of exciting and detecting the fluorochrome.

**Application Notes:** Additional reported applications (for the relevant formats) include: immunohistochemical staining<sup>1</sup> of frozen sections and formalin-fixed paraffin-embedded sections<sup>1</sup>, and immunoprecipitation<sup>1</sup>.

**Application References:**

1. Marder RJ, *et al.* 1985. *Lab. Invest.* 52:497.
2. Norton AJ and Isaacson PG. 1987. *Am. J. Pathol.* 128:225.
3. Hua ZX, *et al.* 1998. *Hum. Pathol.* 29(12):1441.

**Description:** The LN3 monoclonal antibody reacts with the HLA-DR antigen, a member of MHC class II molecules. HLA-DR is a heterodimeric cell surface glycoprotein comprised of a 36 kD α (heavy) chain and a 27 kD β (light) chain. It is expressed on B cells, activated T cells, monocytes/macrophages, dendritic cells and other non-professional APCs. In conjunction with the CD3/TCR complex and CD4 molecules, HLA-DR is critical for efficient peptide presentation to CD4<sup>+</sup> T cells.

**Antigen References:**

1. Levacher M, *et al.* 1990. *Clin. Exp. Immunol.* 81:177.
2. Terstappen L, *et al.* 1990. *J. Leuk. Biol.* 48:138.
3. Edwards J, *et al.* 1985. *J. Immunol.* 137:490.
4. van Es A, *et al.*