

# APC/Fire™ 750 anti-human IgE

**Catalog # /** 2227575 / 25 tests  
**Size:** 2227580 / 100 tests

**Clone:** MHE-18

**Isotype:** Mouse IgG1, κ

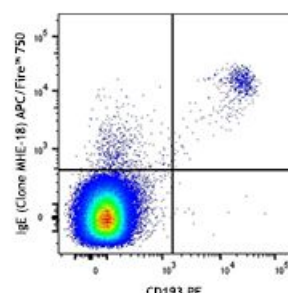
**Immunogen:** Human Ig cocktail

**Reactivity:** Human

**Preparation:** The antibody was purified by affinity chromatography and conjugated with APC/Fire™ 750 under optimal conditions.

**Formulation:** Phosphate-buffered solution, pH 7.2, containing 0.09% sodium azide and 0.2% (w/v) BSA (origin USA).

**Concentration:** Lot-specific



Overnight cultured human peripheral blood mononuclear cells were stained with CD193 PE and anti-human IgE (clone MHE-18) APC/Fire™ 750 (top) or mouse IgG1, κ APC/Fire™ 750 isotype control (bottom).

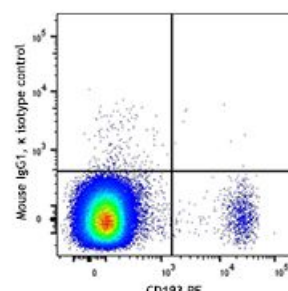
## Applications:

**Applications:** Flow Cytometry

**Recommended Usage:** Each lot of this antibody is quality control tested by immunofluorescent staining with flow cytometric analysis. For flow cytometric staining, the suggested use of this reagent is 5 µl per million cells in 100 µl staining volume or 5 µl per 100 µl of whole blood.

\* APC/Fire™ 750 has a maximum excitation of 650 nm and a maximum emission of 787 nm.

**Application Notes:** The MHE-18 antibody reacts with both soluble and membrane human immunoglobulin E (IgE). It does not react with other Ig isotypes. Some formats of the MHE-18 antibody can be used as primary or secondary reagent for immunofluorescent staining or ELISA analysis.



**Application References:** 1. Clark D, et al. 2013. *J Immunol Methods*. 22:1759. [PubMed](#).

**Description:** IgE is the seventh immunoglobulin made by B cells in the immune response.