

Alexa Fluor™ 647 anti-human IgE

Catalog # / Size: 2227565 / 25 tests
2227570 / 100 tests

Clone: MHE-18

Isotype: Mouse IgG1, κ

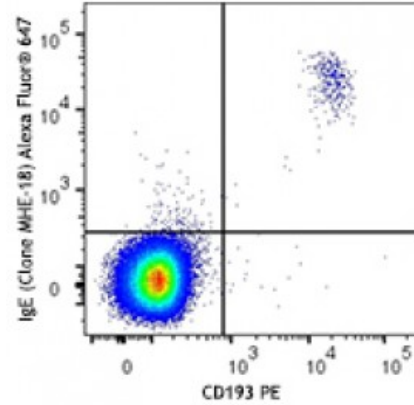
Immunogen: Human Ig cocktail

Reactivity: Human

Preparation: The antibody was purified by affinity chromatography and conjugated with Alexa Fluor® 647 under optimal conditions.

Formulation: Phosphate-buffered solution, pH 7.2, containing 0.09% sodium azide and 0.2% (w/v) BSA (origin USA).

Concentration: Lot-specific

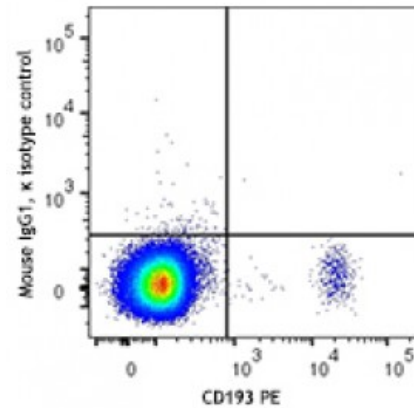


Overnight cultured human peripheral blood mononuclear cells were stained with CD193 PE and anti-human IgE (clone MHE-18) Alexa Fluor® 647 (top) or mouse IgG1, κ Alexa Fluor® 647 (bottom). Data shown was gated on lymphocyte population.

Applications:

Applications: Flow Cytometry

Recommended Usage: Each lot of this antibody is quality control tested by immunofluorescent staining with flow cytometric analysis. For flow cytometric staining, the suggested use of this reagent is 5 microL per million cells or 5 microL per 100 microL of whole blood. It is recommended that the reagent be titrated for optimal performance for each application.



* Alexa Fluor® 647 has a maximum emission of 668 nm when it is excited at 633 nm / 635 nm.

Application Notes: The MHE-18 antibody reacts with both soluble and membrane human immunoglobulin E (IgE). It does not react with other Ig isotypes. Some formats of the MHE-18 antibody can be used as primary or secondary reagent for immunofluorescent staining or ELISA analysis.

Description: IgE is the seventh immunoglobulin made by B cells in the immune response.