

PerCP/Cy5.5 anti-human IgE

Catalog # / Size: 2227555 / 25 tests
2227560 / 100 tests

Clone: MHE-18

Isotype: Mouse IgG1, κ

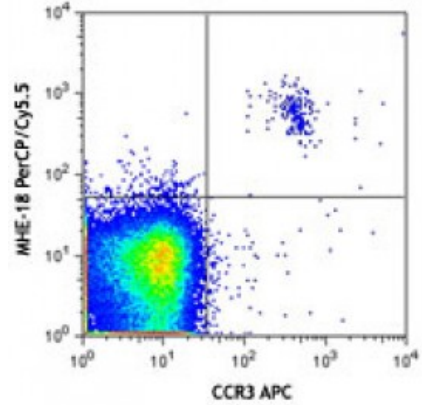
Immunogen: Human Ig cocktail

Reactivity: Human

Preparation: The antibody was purified by affinity chromatography and conjugated with PerCP/Cy5.5 under optimal conditions. The solution is free of unconjugated PerCP/Cy5.5 and unconjugated antibody.

Formulation: Phosphate-buffered solution, pH 7.2, containing 0.09% sodium azide and 0.2% (w/v) BSA (origin USA).

Concentration: Lot-specific



Human peripheral blood leukocytes were stained with CCR3 APC and anti-human IgE (clone MHE-18) PerCP/Cy5.5 (top) or mouse IgG1, κ PerCP/Cy5.5 (bottom). Data shown was gated on lymphocyte population.

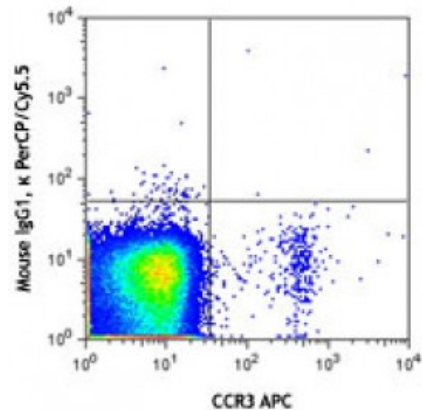
Applications:

Applications: Flow Cytometry

Recommended Usage: Each lot of this antibody is quality control tested by immunofluorescent staining with flow cytometric analysis. For flow cytometric staining, the suggested use of this reagent is 5 microL per million cells or 5 microL per 100 microL of whole blood. It is recommended that the reagent be titrated for optimal performance for each application.

* PerCP/Cy5.5 has a maximum absorption of 482 nm and a maximum emission of 690 nm.

Application Notes: The MHE-18 antibody reacts with both soluble and membrane human immunoglobulin E (IgE). It does not react with other Ig isotypes. Some formats of the MHE-18 antibody can be used as primary or secondary reagent for immunofluorescent staining or ELISA analysis.



Description: IgE is the seventh immunoglobulin made by B cells in the immune response.