

APC anti-human IgE

Catalog # / Size: 2227540 / 100 tests
2227535 / 25 tests

Clone: MHE-18

Isotype: Mouse IgG1, κ

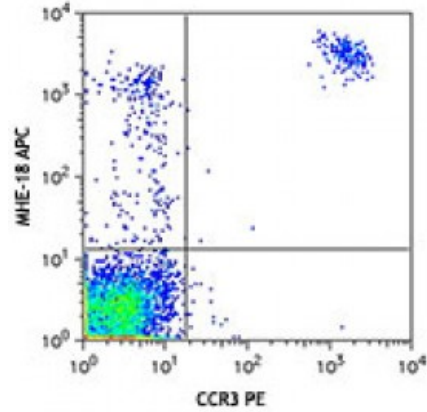
Immunogen: Human Ig cocktail

Reactivity: Human

Preparation: The antibody was purified by affinity chromatography and conjugated with APC under optimal conditions. The solution is free of unconjugated APC and unconjugated antibody.

Formulation: Phosphate-buffered solution, pH 7.2, containing 0.09% sodium azide and 0.2% (w/v) BSA (origin USA).

Concentration: Lot-specific



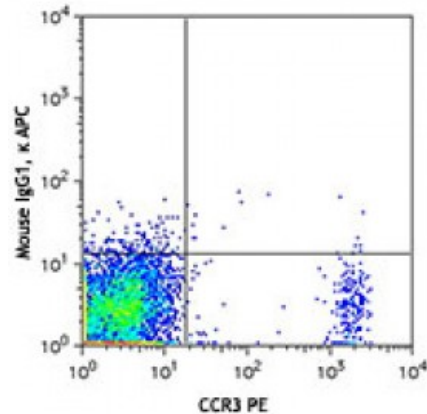
Human peripheral blood leukocytes were stained with CCR3 PE and anti-human IgE (clone MHE-18) APC (top) or mouse IgG1, κ APC (bottom). Data was gated on lymphocyte population.

Applications:

Applications: Flow Cytometry

Recommended Usage: Each lot of this antibody is quality control tested by immunofluorescent staining with flow cytometric analysis. **Test size products are transitioning from 20 microL to 5 microL per test.** Please check your vial or your CoA to find the suggested use of this reagent per million cells in 100 microL staining volume or per 100 microL of whole blood. It is recommended that the reagent be titrated for optimal performance for each application.

Application Notes: The MHE-18 antibody reacts with both soluble and membrane human immunoglobulin E (IgE). It does not react with other Ig isotypes. Some formats of the MHE-18 antibody can be used as primary or secondary reagent for immunofluorescent staining or ELISA analysis.



Description: IgE is the seventh immunoglobulin made by B cells in the immune response.