

Biotin anti-human IgE

Catalog # / Size: 2227520 / 100 µg
2227515 / 25 µg

Clone: MHE-18

Isotype: Mouse IgG1, κ

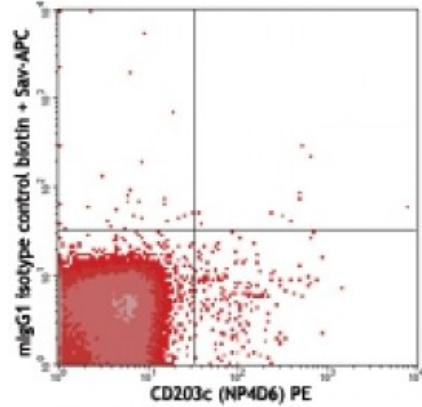
Immunogen: Human Ig cocktail

Reactivity: Human

Preparation: The antibody was purified by affinity chromatography, and conjugated with biotin under optimal conditions. The solution is free of unconjugated biotin.

Formulation: Phosphate-buffered solution, pH 7.2, containing 0.09% sodium azide.

Concentration: 0.5



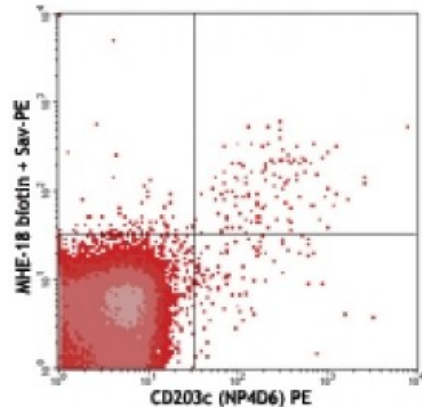
Overnight cultured human peripheral blood mononuclear cells stained with CD203c (NP4D6) PE and biotinylated mouse IgG1 isotype control, followed by Sav-APC (gated on lymphocyte population)

Applications:

Applications: Other

Recommended Usage: Each lot of this antibody is quality control tested by immunofluorescent staining with flow cytometric analysis. For flow cytometric staining, the suggested use of this reagent is ≤2.0 microg per million cells in 100 microL volume. It is recommended that the reagent be titrated for optimal performance for each application.

Application Notes: The MHE-18 antibody reacts with both soluble and membrane human immunoglobulin E (IgE). It does not react with other Ig isotypes. Some formats of the MHE-18 antibody can be used as primary or secondary reagent for immunofluorescent staining or ELISA analysis.



Overnight cultured human peripheral blood mononuclear cells stained with CD203c (NP4D6) PE and biotinylated MHE-18, followed by Sav-APC (gated on lymphocyte population)

Description: IgE is the seventh immunoglobulin made by B cells in the immune response.