

PE anti-human CD340 (erbB2/HER-2)

Catalog # / Size: 2222025 / 25 tests
2222030 / 100 tests

Clone: 24D2

Isotype: Mouse IgG1, κ

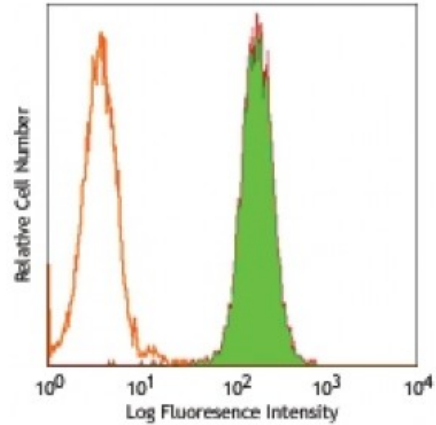
Immunogen: NIH-3T3 transfected with human HER-2

Reactivity: Human

Preparation: The antibody was purified by affinity chromatography, and conjugated with PE under optimal conditions. The solution is free of unconjugated PE and unconjugated antibody.

Formulation: Phosphate-buffered solution, pH 7.2, containing 0.09% sodium azide and 0.2% (w/v) BSA (origin USA).

Concentration: Lot-specific



Human breast adenocarcinoma cell line MCF-7 stained with 24D2 PE

Applications:

Applications: Flow Cytometry

Recommended Usage: Each lot of this antibody is quality control tested by immunofluorescent staining with flow cytometric analysis. **Test size products are transitioning from 20 microl to 5 microl per test.** Please check your vial or your CoA to find the suggested use of this reagent per million cells in 100 microl staining volume or per 100 microl of whole blood. It is recommended that the reagent be titrated for optimal performance for each application.

Application References: 1. Bühring HJ, *et al.* 1995. *Blood* 86:1916.

Description: CD340 is also known as HER2/erbB2, tyrosine kinase cell surface receptor HER2, oncogene ERBB2, and oncogene NGL, neuroblastoma- or glioblastoma-derived. It is a member of the epidermal growth factor receptor family of cell membrane tyrosine kinases containing a single transmembrane domain and has an approximate molecular weight of 185 kD. CD340 contains three furin repeats and two cheY homologous receiver domains in the extracellular region (ECR). The HER2/erbB2 protein is expressed on many tumor cells, including some breast cancers, lung adenocarcinoma, gastric cancer, ovarian cancer, glioblastoma, some c-ALL blasts and bone marrow mesenchymal stem cells. Although the erbB2/HER2 protein contains no ligand binding domain, this protein interacts with other EGF receptor family members to form a heterodimer, stabilize ligand binding, and enhance kinase-mediated downstream signaling. CD340 has been shown to be involved in embryonic development and cancer progression; this protein is amplified in adenocarcinoma of the lung, some breast cancers, glioblastoma, gastric cancer, and ovarian carcinoma, where it functions as an oncogene. Overexpression of erbB2 in breast cancers has been shown to confer Taxol resistance and is a therapeutic target in a number of human cancers. The erbB2/HER-2 protein has been shown to interact with a large number of proteins, including SHC1, EGF receptor, neuroregulin 1, c-Src, integrin β4, Grb2, Grb7, SOS1, caveolin 1, JAK2, PAK1, FAK, and β-catenin, among others. CD340 is extensively modified by tyrosine phosphorylation on multiple residues (Y1023, Y1139, Y1196, Y1221, Y1222, Y1248).

- Antigen**
- References:**
1. Akiyama T, *et al.* 1986. *Science* 232:1644.
 2. Bargmann CI, *et al.* 1986. *Nature* 319:226.
 3. Pegram MD, *et al.* 1997. *Oncogene* 15:537.
 4. Slamon DJ, *et al.* 1989. *Science*