

Brilliant Violet 650™ anti-human CD326 (EpCAM)

Catalog # / Size: 2221130 / 100 tests
2221125 / 25 tests

Clone: 9C4

Isotype: Mouse IgG2b, κ

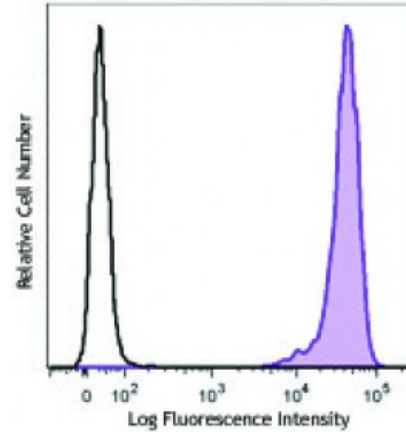
Immunogen: DU.4475 breast carcinoma

Reactivity: Human

Preparation: The antibody was purified by affinity chromatography and conjugated with Brilliant Violet 650™ under optimal conditions. The solution is free of unconjugated Brilliant Violet 650™ and unconjugated antibody.

Formulation: Phosphate-buffered solution, pH 7.2, containing 0.09% sodium azide and BSA (origin USA).

Concentration: Lot-specific



Human colon carcinoma cell line HT29 was stained with CD326 (clone 9C4) Brilliant Violet 650™ (filled histogram) or mouse IgG2b, κ Brilliant Violet 650™ isotype control (open histogram).

Applications:

Applications: Flow Cytometry

Recommended Usage: Each lot of this antibody is quality control tested by immunofluorescent staining with flow cytometric analysis. For flow cytometric staining, the suggested use of this reagent is ≤5 microL per million cells or 5 microL per 100 microL of whole blood. It is recommended that the reagent be titrated for optimal performance for each application.

Brilliant Violet 650™ excites at 405 nm and emits at 645 nm. The bandpass filter 660/20 nm is recommended for detection, although filter optimization may be required depending on other fluorophores used. **Be sure to verify that your cytometer configuration and software setup are appropriate for detecting this channel.** Refer to your instrument manual or manufacturer for support. Brilliant Violet 650™ is a trademark of Sirigen Group Ltd.

This product is subject to proprietary rights of Sirigen Inc. and is made and sold under license from Sirigen Inc. The purchase of this product conveys to the buyer a non-transferable right to use the purchased product for research purposes only. This product may not be resold or incorporated in any manner into another product for resale. Any use for therapeutics or diagnostics is strictly prohibited. This product is covered by U.S. Patent(s), pending patent applications and foreign equivalents.

Application Notes: Additional reported applications (for the relevant formats) include: immunofluorescence and immunohistochemistry.

Application References: 1. Lammers R, *et al.* 2002. *Exp. Hematol.* 30:537.
2. Schultz LD, *et al.* 2010. *P. Natl. Acad. Sci. USA* 107:13022. [PubMed](#)
3. Human Protein Atlas <http://www.proteinatlas.org/ENSG00000119888/antibody> (IHC)

Description: CD326 is also known as Ep-CAM, tumor associated calcium signal transducer 1,

epithelial cell surface antigen, epithelial glycoprotein 2, EGP2, adenocarcinoma associated antigen, and TROP1. CD326 is a type I transmembrane protein containing six disulfide bridges and one THYRO domain. This cell surface glycosylated 40 kD protein is highly expressed in bone marrow, colon, lung, and most normal epithelial cells and is expressed on carcinomas of gastrointestinal origin. Recently, it has been reported that CD326 expression occurs during the early steps of erythropoiesis. CD326 functions as a homotypic calcium-independent cell adhesion molecule and is believed to be involved in carcinogenesis by its ability to induce genes involved in cellular metabolism and proliferation. CD326 antigen is an immunotherapeutic target for the treatment of human carcinomas.

**Antigen
References:**

1. Strnad J, *et al.* 1989. *Cancer Res.* 49:314.
2. Munz M, *et al.* 2004. *Oncogene* 23:5748.
3. Rao CG, *et al.* 2005. *Int. J. Oncol.* 27:49.