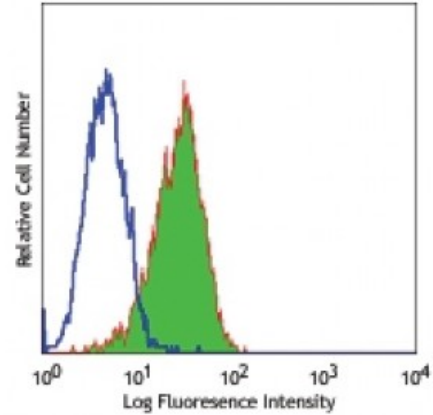


FITC anti-human CD324 (E-Cadherin)

Catalog # / Size:	2220520 / 100 tests 2220515 / 25 tests
Clone:	67A4
Isotype:	Mouse IgG1, κ
Immunogen:	T-47D cells
Reactivity:	Human
Preparation:	The antibody was purified by affinity chromatography, and conjugated with FITC under optimal conditions. The solution is free of unconjugated FITC.
Formulation:	Phosphate-buffered solution, pH 7.2, containing 0.09% sodium azide and 0.2% (w/v) BSA (origin USA).
Concentration:	Lot-specific



Human colon carcinoma cell line (HT29) stained with CD324 (clone 67A4) FITC (filled histogram), or mouse IgG1, κ FITC (open histogram).

Applications:

Applications:	Immunofluorescence
Recommended Usage:	Each lot of this antibody is quality control tested by immunofluorescent staining with flow cytometric analysis. Test size products are transitioning from 20 microL to 5 microL per test. Please check your vial or your CoA to find the suggested use of this reagent per million cells in 100 microL staining volume or per 100 microL of whole blood. It is recommended that the reagent be titrated for optimal performance for each application.

Application References:	<ol style="list-style-type: none">Armeanu S, <i>et al.</i> 1995. <i>J. Cell Biol.</i> 131:243.Bühring HJ, <i>et al.</i> 1996. <i>Leukemia</i> 10:106.Yauch RL, <i>et al.</i> 2005. <i>Clin. Cancer Res.</i> 11:8686. (WB)Chandrasekaran S, <i>et al.</i> 2011. <i>BioMaterials.</i> 32:7159. PubMedOeztuerk-Winder F, <i>et al.</i> 2012. <i>EMBO J.</i> 31:3431. (FC) PubMedWu Y, <i>et al.</i> 2014. <i>Cancer Lett.</i> 342:82. PubMed
--------------------------------	--

Description: The 67A4 antibody recognizes human CD324 also known as E-cadherin, cadherin-1, and UVO. CD324, a member of the cadherin superfamily, is a calcium-dependent, transmembrane cell-cell adhesion glycoprotein composed of 4 extracellular cadherin repeats and a highly conserved cytoplasmic tail region with a predicted molecular weight of approximately 100 kD. CD324 is widely expressed in epithelial cells in the colon, uterus, liver, keratinocytes, brain, heart, muscle, kidney, and pancreas, as well as erythroid cells. CD324 functions as a cell adhesion molecule involved in development, bacterial pathogenesis, and tumor invasion. In bacterial pathogenesis, the ectodomain of CD324 mediates bacterial adhesion to mammalian cells, while the cytoplasmic domain is required for internalization. CD324 binds to the $\alpha_5\beta_7$ integrin to mediate cell adhesion and also interacts with a number of intracellular proteins including including erbin, ezrin, caspase-3, caspase 8, β -catenin, presenilin 1, casein kinase II, as well as other extracellular proteins including the EGF receptor. CD324 is phosphorylated on multiple residues (S857, S866, S870, S872), and can be proteolytically cleaved at residue D769 by caspase-3. The 67A4 antibody has been shown to be useful for

flow cytometry.

**Antigen
References:**

1. Overduin M, *et al.* 1995. *Science* 267:386.
2. Boggon TJ, *et al.* 2002. *Science* 296:1303.
3. Berx G, *et al.* 1995. *EMBO J.* 14:6107.
4. Perl AK, *et al.* 1998. *Nature* 39