

APC/Fire™ 810 anti-human CD15 (SSEA-1)

Catalog # / 2215290 / 100 tests
Size: 2215285 / 25 tests

Clone: W6D3

Isotype: Mouse IgG1, κ

Immunogen: WERI-RB-1 retinoblastoma cell line

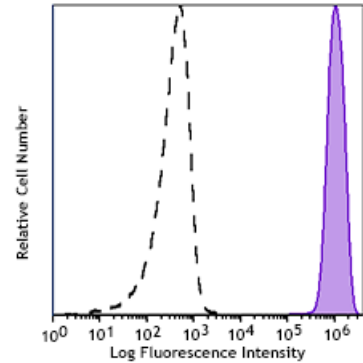
Reactivity: Human

Preparation: The antibody was purified by affinity chromatography and conjugated with APC/Fire™ 810 under optimal conditions.

Formulation: Phosphate-buffered solution, pH 7.2, containing 0.09% sodium azide and 0.2% (w/v) BSA (origin USA)

Workshop Number: HCDM listed

Concentration: Lot-specific



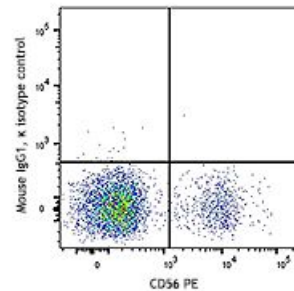
Human peripheral blood granulocytes were stained with anti-human CD15 (SSEA-1) (clone W6D3) APC/Fire™ 810 (filled histogram), or mouse IgG1, κ APC/Fire™ 810 isotype control (open histogram).

Applications:

Applications: Flow Cytometry

Recommended Usage: Each lot of this antibody is quality control tested by immunofluorescent staining with flow cytometric analysis. For flow cytometric staining, the suggested use of this reagent is 5 µL per million cells in 100 µL staining volume or 5 µL per 100 µL of whole blood. It is recommended that the reagent be titrated for optimal performance for each application.

* APC/Fire™ 810 has a maximum excitation of 650 nm and a maximum emission of 810 nm.



Application Notes: The 15-2 antibody blocks the interaction of MMR with its ligand, and inhibits mannose receptor-mediated degradation of t-PA by macrophages. Additional reported applications of this antibody (for the relevant formats) include: Western blotting¹, blocking of ligand binding^{1,2}, immunofluorescence³, and immunohistochemical staining of acetone-fixed frozen tissue sections¹. The Ultra-LEAF™ purified antibody (Endotoxin < 0.01 EU/μg, Azide-Free, 0.2 μm filtered) is recommended for functional assays (Cat. No. 321149 and 321150).

Application References:

1. Noorman F, *et al.* 1997. *J. Leukocyte Biol.* 61:63. (WB, IHC, Block)
2. Barrett-Bergshoeff M, *et al.* 1997. *Thromb Haemost.* 77:718. (Block)
3. Kato M, *et al.* 2007. *J. Immunol.* 179:6052. (IF)

Description: CD15 is 3-fucosyl-N-acetyllactosamine (3-FAL) also known as Lewis X, 3-FAL, X-hapten, and SSEA-1. CD15 is expressed on granulocytes and monocytes. It has also been shown to be expressed on Langerhans cells. CD15 has been implicated in adhesion as well as chemotaxis, phagocytosis, and bactericidal activity.

Antigen References:

1. Stocks SC, *et al.* 1990. *Biochem. J.* 268:275.