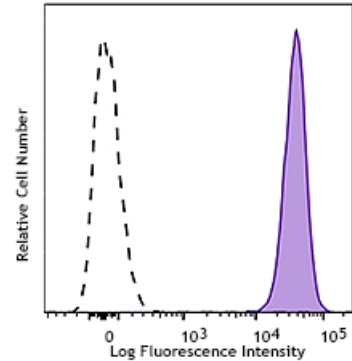


**APC/Cy7 anti-human CD15 (SSEA-1)**

**Catalog # /** 2215235 / 25 tests  
**Size:** 2215240 / 100 tests  
**Clone:** W6D3  
**Isotype:** Mouse IgG1, κ  
**Immunogen:** WERI-RB-1 retinoblastoma cell line  
**Reactivity:** Human  
**Preparation:** The antibody was purified by affinity chromatography and conjugated with APC/Cy7 under optimal conditions. The solution is free of unconjugated APC/Cy7 and unconjugated antibody.  
**Formulation:** Phosphate-buffered solution, pH 7.2, containing 0.09% sodium azide and 0.2% (w/v) BSA (origin USA).  
**Workshop Number:** HCDM listed  
**Concentration:** Lot-specific



Human peripheral blood granulocytes were stained with CD15 (SSEA-1, clone W6D3) APC/Cy7 (filled histogram) or Mouse IgG1, κ APC/Cy7 isotype control (open histogram).

**Applications:**

**Applications:** Flow Cytometry

**Recommended Usage:** Each lot of this antibody is quality control tested by immunofluorescent staining with flow cytometric analysis. For flow cytometric staining, the suggested use of this reagent is 5 µl per million cells or 5 µl per 100 µl of whole blood. It is recommended that the reagent be titrated for optimal performance for each application.

**Application References:** 1. Stocks SC, *et al.* 1990. *Biochem. J.* 268:275.

**Description:** CD15 is 3-fucosyl-N-acetyllactosamine (3-FAL) also known as Lewis X, 3-FAL, X-hapten, and SSEA-1. CD15 is expressed on granulocytes and monocytes. It has also been shown to be expressed on Langerhans cells and some malignant cells. CD15 has been implicated in adhesion as well as chemotaxis, phagocytosis, and bactericidal activity.

**Antigen References:** 1. Stocks SC, *et al.* 1990. *Biochem. J.* 268:275.