

Brilliant Violet 605™ anti-human CD15 (SSEA-1)

Catalog # / Size: 2215160 / 100 tests
2215155 / 25 tests

Clone: W6D3

Isotype: Mouse IgG1, κ

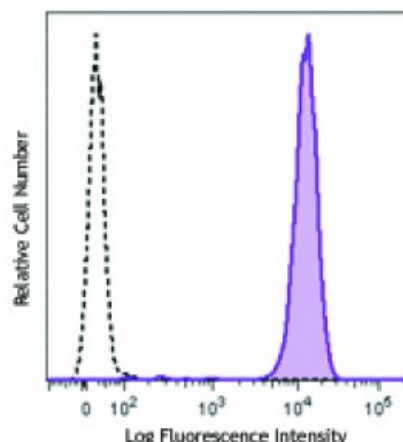
Immunogen: WERI-RB-1 retinoblastoma cell line

Reactivity: Human

Preparation: The antibody was purified by affinity chromatography and conjugated with Brilliant Violet 605™ under optimal conditions. The solution is free of unconjugated Brilliant Violet 605™ and unconjugated antibody.

Formulation: Phosphate-buffered solution, pH 7.2, containing 0.09% sodium azide and BSA (origin USA).

Concentration: Lot-specific



Human peripheral blood granulocytes were stained with CD15 (clone W6D3) Brilliant Violet 605™ (filled histogram) or mouse IgG1, κ Brilliant Violet 605™ isotype control (open histogram).

Applications:

Applications: Flow Cytometry

Recommended Usage: Each lot of this antibody is quality control tested by immunofluorescent staining with flow cytometric analysis. For flow cytometric staining, the suggested use of this reagent is ≤ 5 microL per million cells or 5 microL per 100 microL of whole blood. It is recommended that the reagent be titrated for optimal performance for each application.

Brilliant Violet 605™ excites at 405 nm and emits at 603 nm. The bandpass filter 610/20 nm is recommended for detection, although filter optimization may be required depending on other fluorophores used. **Be sure to verify that your cytometer configuration and software setup are appropriate for detecting this channel.** Refer to your instrument manual or manufacturer for support. Brilliant Violet 605™ is a trademark of Sirigen Group Ltd.

This product is subject to proprietary rights of Sirigen Inc. and is made and sold under license from Sirigen Inc. The purchase of this product conveys to the buyer a non-transferable right to use the purchased product for research purposes only. This product may not be resold or incorporated in any manner into another product for resale. Any use for therapeutics or diagnostics is strictly prohibited. This product is covered by U.S. Patent(s), pending patent applications and foreign equivalents.

Description: CD15 is 3-fucosyl-N-acetylglucosamine (3-FAL) also known as Lewis X, 3-FAL, X-hapten, and SSEA-1. CD15 is expressed on granulocytes and monocytes. It has also been shown to be expressed on Langerhans cells and some malignant cells. CD15 has been implicated in adhesion as well as chemotaxis, phagocytosis, and bactericidal activity.

Antigen References: 1. Stocks SC, et al. 1990. *Biochem. J.* 268:275.