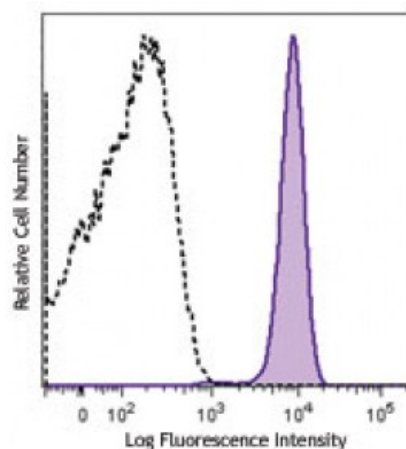


Alexa Fluor® 700 anti-human CD15 (SSEA-1)

Catalog # / Size: 2215130 / 100 tests
Clone: W6D3
Isotype: Mouse IgG1, κ
Immunogen: WERI-RB-1 retinoblastoma cell line
Reactivity: Human
Preparation: The antibody was purified by affinity chromatography and conjugated with Alexa Fluor® 700 under optimal conditions.
Formulation: Phosphate-buffered solution, pH 7.2, containing 0.09% sodium azide and 0.2% (w/v) BSA (origin USA).
Concentration: Lot-specific



Human peripheral blood granulocytes were stained with CD15 (clone W6D3) Alexa Fluor® 700 (filled histogram), or mouse IgG1, κ Alexa Fluor® 700 isotype control (open histogram).

Applications:

Applications: Flow Cytometry

Recommended Usage: Each lot of this antibody is quality control tested by immunofluorescent staining with flow cytometric analysis. The suggested use of this reagent is 5 μ L per million cells or 5 μ L per 100 μ L of whole blood. It is highly recommended that the reagent be titrated for optimal performance for each application.

* Alexa Fluor® 700 has a maximum emission of 719 nm when it is excited at 633 nm / 635 nm. Prior to using Alexa Fluor® 700 conjugate for flow cytometric analysis, please verify your flow cytometer's capability of exciting and detecting the fluorochrome.

Application References: 1. Iversen TZ, *et al.* 2014. *Clin Cancer Res.* 20:221. [PubMed](#)

Description: CD15 is 3-fucosyl-N-acetyllactosamine (3-FAL) also known as Lewis X, 3-FAL, X-hapten, and SSEA-1. CD15 is expressed on granulocytes and monocytes. It has also been shown to be expressed on Langerhans cells and some malignant cells. CD15 has been implicated in adhesion as well as chemotaxis, phagocytosis, and bactericidal activity.

Antigen References: 1. Stocks SC, *et al.* 1990. *Biochem. J.* 268:275.