

## APC anti-human CD15 (SSEA-1)

**Catalog # / Size:** 2215040 / 100 tests  
2215035 / 25 tests

**Clone:** W6D3

**Isotype:** Mouse IgG1,  $\kappa$

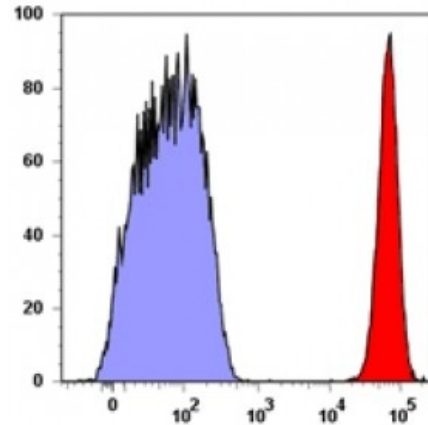
**Immunogen:** WERI-RB-1 retinoblastoma cell line

**Reactivity:** Human

**Preparation:** The antibody was purified by affinity chromatography, and conjugated with APC under optimal conditions. The solution is free of unconjugated APC and unconjugated antibody.

**Formulation:** Phosphate-buffered solution, pH 7.2, containing 0.09% sodium azide and 0.2% (w/v) BSA (origin USA).

**Concentration:** Lot-specific



Human peripheral blood granulocytes stained with W6D3 APC

## Applications:

**Applications:** Flow Cytometry

**Recommended Usage:** Each lot of this antibody is quality control tested by immunofluorescent staining with flow cytometric analysis. **Test size products are transitioning from 20 microL to 5 microL per test.** Please check your vial or your CoA to find the suggested use of this reagent per million cells in 100 microL staining volume or per 100 microL of whole blood. It is recommended that the reagent be titrated for optimal performance for each application.

**Description:** CD15 is 3-fucosyl-N-acetyllactosamine (3-FAL) also known as Lewis X, 3-FAL, X-hapten, and SSEA-1. CD15 is expressed on granulocytes and monocytes. It has also been shown to be expressed on Langerhans cells and some malignant cells. CD15 has been implicated in adhesion as well as chemotaxis, phagocytosis, and bactericidal activity.

**Antigen References:** 1. Stocks SC, *et al.* 1990. *Biochem. J.* 268:275.