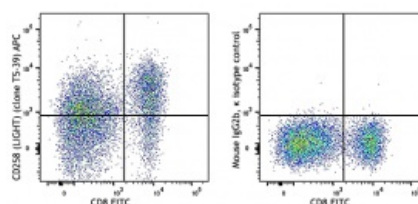


APC anti-human CD258 (LIGHT)

Catalog # / Size:	2193545 / 25 tests 2193550 / 100 tests
Clone:	T5-39
Isotype:	Mouse IgG2b, κ
Immunogen:	recombinant human LIGHT (TL5) protein
Reactivity:	Other
Preparation:	The antibody was purified by affinity chromatography and conjugated with APC under optimal conditions. The solution is free of unconjugated APC and unconjugated antibody.
Formulation:	Phosphate-buffered solution, pH 7.2, containing 0.09% sodium azide and 0.2% (w/v) BSA (origin USA).
Concentration:	Lot-specific

Applications:

Applications:	Flow Cytometry
Recommended Usage:	Each lot of this antibody is quality control tested by immunofluorescent staining with flow cytometric analysis. For flow cytometric staining, the suggested use of this reagent is 5 μ l per million cells or 5 μ l per 100 μ l of whole blood. It is recommended that the reagent be titrated for optimal performance for each application.



PMA/ionomycin-stimulated (day-2) human peripheral blood lymphocytes stained with CD8 FITC and CD258/LIGHT (clone T5-39) APC (left) or mouse IgG2b

Application References:	1. Mauri DN, <i>et al.</i> 1998. <i>Immunity</i> 8:21. 2. Harrop JA, <i>et al.</i> 1998. <i>J. Biol. Chem.</i> 273:27548. 3. Morel Y, <i>et al.</i> 2000. <i>J. Immunol.</i> 165:4397. 4. Wang J, <i>et al.</i> 2004. <i>J. Cl</i>
--------------------------------	---

Description:	The T5-39 antibody recognizes human LIGHT (CD258) also known as ligand for herpesvirus entry mediator, tumor necrosis factor receptor-like-2 ligand, TR2 ligand, and tumor necrosis factor ligand superfamily member 14 (TNFSF14). LIGHT is a type 2 transmembrane protein, and a member of the tumor necrosis factor ligand superfamily. LIGHT can be proteolytically cleaved and two isoforms have been shown to be produced by alternative splicing. The apparent molecular weight of LIGHT is approximately 30 kD. LIGHT expression has been observed in spleen, brain and kidney; expression is upregulated on activated T cells (particularly CD8 ⁺ cells). LIGHT stimulates proliferation of T cells and inhibits growth of some tumor cells. This protein has been shown to play a role in
---------------------	---

intestinal inflammation and contribute to IgA nephropathy. LIGHT is a ligand for HVEM, and LT β R and has also been shown to bind DcR3 and modulate function. In addition, LIGHT has been shown to interact with other proteins including TRAF2, TRAF3, and DIABLO. The T5-39 antibody has been shown to be useful for flow cytometry and ELISA.

Antigen
References:

1. Mauri DN, *et al.* 1998. *Immunity* 8:21.
2. Harrop JA, *et al.* 1998. *J. Biol. Chem.* 273:27548.
3. Morel Y, *et al.* 2000. *J. Immunol.* 165:4397.
4. Wang J, *et al.* 2004. *J. Cl*