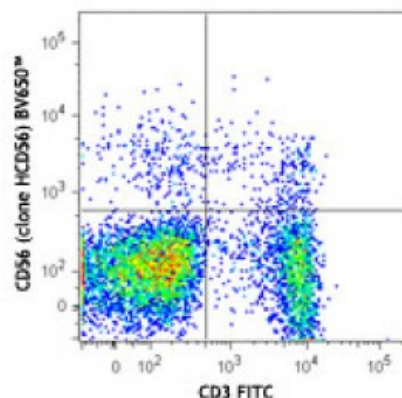


Brilliant Violet 650™ anti-human CD56 (NCAM)

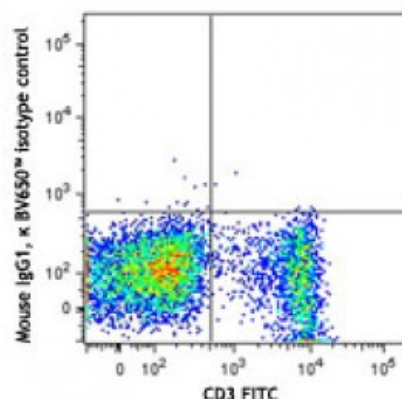
Catalog # / Size:	2191720 / 100 tests 2191715 / 25 tests
Clone:	HCD56
Isotype:	Mouse IgG1, κ
Reactivity:	Human
Preparation:	The antibody was purified by affinity chromatography and conjugated with Brilliant Violet 650™ under optimal conditions. The solution is free of unconjugated Brilliant Violet 650™ and unconjugated antibody.
Formulation:	Phosphate-buffered solution, pH 7.2, containing 0.09% sodium azide and BSA (origin USA).
Concentration:	Lot-specific



Human peripheral blood lymphocytes were stained with CD3 FITC and CD56 (clone HCD56) Brilliant Violet 650™ (top) or mouse IgG1, κ Brilliant Violet 650™ isotype control (bottom).

Applications:

Applications:	Flow Cytometry
Recommended Usage:	Each lot of this antibody is quality control tested by immunofluorescent staining with flow cytometric analysis. For flow cytometric staining, the suggested use of this reagent is ≤5 microL per million cells or 5 microL per 100 microL of whole blood. It is recommended that the reagent be titrated for optimal performance for each application.



Brilliant Violet 650™ excites at 405 nm and emits at 645 nm. The bandpass filter 660/20 nm is recommended for detection, although filter optimization may be required depending on other fluorophores used. **Be sure to verify that your cytometer configuration and software setup are appropriate for detecting this channel.** Refer to your instrument manual or manufacturer for support. Brilliant Violet 650™ is a trademark of Sirigen Group Ltd.

This product is subject to proprietary rights of Sirigen Inc. and is made and sold under license from Sirigen Inc. The purchase of this product conveys to the buyer a non-transferable right to use the purchased product for research

purposes only. This product may not be resold or incorporated in any manner into another product for resale. Any use for therapeutics or diagnostics is strictly prohibited. This product is covered by U.S. Patent(s), pending patent applications and foreign equivalents.

- Application References:**
1. Kishimoto T, *et al.* Eds. 1997. Leucocyte Typing VI. Garland Publishing Inc. London.
 2. Correia DV, *et al.* 2011. *Blood* 118:992. (FC) [PubMed](#)
 3. Lee J, *et al.* 2015. *J Exp Med.* 212:385. [PubMed](#)
 4. Breton G, *et al.* 2015. *J Exp Med.* 212:401. [PubMed](#)
-

Description: CD56 is a single transmembrane glycoprotein also known as NCAM (Neural Cell Adhesion Molecule), Leu-19, or NKH1. It is a member of the Ig superfamily. The 140 kD isoform is expressed on NK cells and NK-T cells. CD56 is also expressed in the brain (cerebellum and cortex) and at neuromuscular junctions. Certain large granular lymphocyte (LGL) leukemias, small-cell lung carcinomas, neuronal derived tumors, myelomas, and myeloid leukemias also express CD56. CD56 plays a role in homophilic and heterophilic adhesion via binding to itself or heparin sulfate.

- Antigen References:**
1. Lanier L, *et al.* 1991. *J. Immunol.* 146:4421.
 2. Hemperly J, *et al.* 1990. *J. Mol. Neurosci.* 2:71.
 3. Cremer H, *et al.* 1994. *Nature* 367:455.