

**PE/Dazzle™ 594 anti-human CD3**

**Catalog # / Size:** 2186725 / 25 tests  
2186730 / 100 tests

**Clone:** OKT3

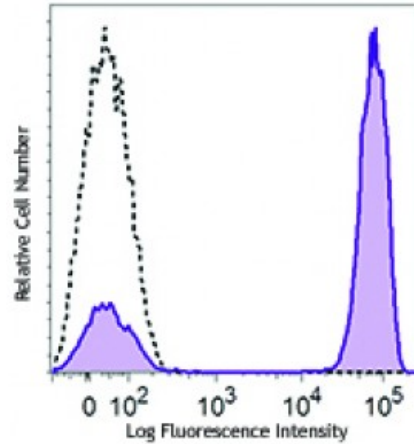
**Isotype:** Mouse IgG2a, κ

**Reactivity:** Human

**Preparation:** The antibody was purified by affinity chromatography and conjugated with PE/Dazzle™ 594 under optimal conditions. The solution is free of unconjugated PE/Dazzle™ 594 and unconjugated antibody.

**Formulation:** Phosphate-buffered solution, pH 7.2, containing 0.09% sodium azide and 0.2% (w/v) BSA (origin USA).

**Concentration:** Lot-specific



Human peripheral blood lymphocytes were stained with CD3 (clone OKT3) PE/Dazzle™ 594 (filled histogram) or mouse IgG2a, κ PE/Dazzle™ 594 isotype control (open histogram).

**Applications:**

**Applications:** Flow Cytometry

**Recommended Usage:** Each lot of this antibody is quality control tested by immunofluorescent staining with flow cytometric analysis. For flow cytometric staining, the suggested use of this reagent is 5 microL per million cells or 5 microL per 100 microL of whole blood. It is recommended that the reagent be titrated for optimal performance for each application.

\* PE/Dazzle™ 594 has a maximum excitation of 566 nm and a maximum emission of 610 nm.

This product is subject to proprietary rights of Sirigen Inc. and is made and sold under license from Sirigen Inc. The purchase of this product conveys to the buyer a non-transferable right to use the purchased product for research purposes only. This product may not be resold or incorporated in any manner into another product for resale. Any use for therapeutics or diagnostics is strictly prohibited. This product is covered by U.S. Patent(s), pending patent applications and foreign equivalents.

**Application Notes:** The OKT3 monoclonal antibody reacts with an epitope on the epsilon-subunit within the human CD3 complex.

Clone OKT3 can block the binding of clones SK7 and UCHT1.4 The OKT3 antibody is able to induce T cell activation. Additional reported applications (for the relevant formats) include: immunohistochemical staining of acetone-fixed frozen sections and activation of T cells. The LEAF™ purified antibody (Endotoxin <0.1 EU/μg, Azide-Free, 0.2 μm filtered) is recommended for functional assays (Cat. No. 317304). For highly sensitive assays, we recommend Ultra-LEAF™ purified antibody (Cat. No. 317326) with a lower endotoxin limit than standard LEAF™ purified antibodies (Endotoxin <0.01 EU/microg).

**Application References:** 1. Schlossman S, *et al.* Eds. 1995. Leucocyte Typing V. Oxford University Press. New York.

2. Knapp W. 1989. Leucocyte Typing IV. Oxford University Press New York.
  3. Barclay N, *et al.* 1997. The Leucocyte Antigen Facts Book. Academic Press Inc. San Diego.
  4. Li B, *et al.* 2005. *Immunology* 116:487.
  5. Jeong HY, *et al.* 2008. *J. Leuckocyte Biol.* 83:755. [PubMed](#)
  6. Alter G, *et al.* 2008. *J. Virol.* 82:9668. [PubMed](#)
  7. Manevich-Mendelson E, *et al.* 2009. *Blood* 114:2344. [PubMed](#)
  8. Pinto JP, *et al.* 2010. *Immunology.* 130:217. [PubMed](#)
  9. Biggs MJ, *et al.* 2011. *J. R. Soc. Interface.* 8:1462. [PubMed](#)
- 

**Description:** CD3 $\epsilon$  is a 20 kD chain of the CD3/T cell receptor (TCR) complex, which is composed of two CD3 $\epsilon$ , one CD3 $\gamma$ , one CD3 $\delta$ , one CD3 $\zeta$  (CD247), and a T cell receptor ( $\alpha/\beta$  or  $\gamma/\delta$ ) heterodimer. It is found on all mature T lymphocytes, NK T cells, and some thymocytes. CD3, also known as T3, is a member of the immunoglobulin superfamily that plays a role in antigen recognition, signal transduction, and T cell activation.

**Antigen**  
**References:**

1. Barclay N, *et al.* 1993. The Leucocyte FactsBook. Academic Press. San Diego.
2. Beverly P, *et al.* 1981. *Eur. J. Immunol.* 11:329.
3. Lanier L, *et al.* 1986. *J. Immunol.* 137:2501.