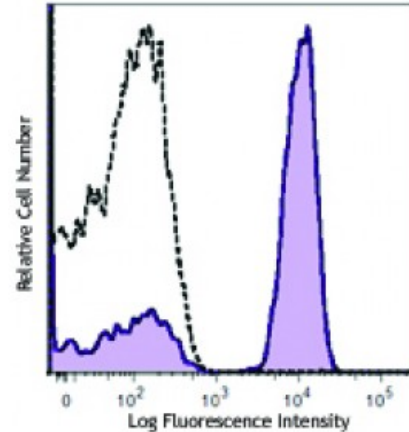


PerCP anti-human CD3

| | |
|--------------------------|--|
| Catalog # / Size: | 2186685 / 25 tests 2186690 / 100 tests |
| Clone: | OKT3 |
| Isotype: | Mouse IgG2a, κ |
| Reactivity: | Human |
| Preparation: | The antibody was purified by affinity chromatography and conjugated with PerCP under optimal conditions. The solution is free of unconjugated PerCP and unconjugated antibody. |
| Formulation: | Phosphate-buffered solution, pH 7.2, containing 0.09% sodium azide and 0.2% (w/v) BSA (origin USA). |
| Concentration: | Lot-specific |



Human peripheral blood lymphocytes were stained with CD3 (clone OKT3) PerCP (filled histogram) or mouse IgG2a, κ PerCP isotype control (open histogram).

Applications:

Applications: Flow Cytometry

Recommended Usage: Each lot of this antibody is quality control tested by immunofluorescent staining with flow cytometric analysis. For flow cytometric staining, the suggested use of this reagent is 5 microL per million cells or 5 microL per 100 microL of whole blood. It is recommended that the reagent be titrated for optimal performance for each application.

* PerCP has a maximum absorption of 482 nm and a maximum emission of 675 nm.

Application Notes: The OKT3 monoclonal antibody reacts with an epitope on the epsilon-subunit within the human CD3 complex.

Clone OKT3 can block the binding of clones SK7 and UCHT1.4. The OKT3 antibody is able to induce T cell activation. Additional reported applications (for the relevant formats) include: immunohistochemical staining of acetone-fixed frozen sections and activation of T cells. The LEAF™ purified antibody (Endotoxin <0.1 EU/ μ g, Azide-Free, 0.2 μ m filtered) is recommended for functional assays (Cat. No. 317304). For highly sensitive assays, we recommend Ultra-LEAF™ purified antibody (Cat. No. 317326) with a lower endotoxin limit than standard LEAF™ purified antibodies (Endotoxin <0.01 EU/microg).

- Application References:**
- Schlossman S, *et al.* Eds. 1995. Leucocyte Typing V. Oxford University Press. New York.
 - Knapp W. 1989. Leucocyte Typing IV. Oxford University Press New York.
 - Barclay N, *et al.* 1997. The Leucocyte Antigen Facts Book. Academic Press Inc. San Diego.
 - Li B, *et al.* 2005. *Immunology* 116:487.
 - Jeong HY, *et al.* 2008. *J. Leucocyte Biol.* 83:755. [PubMed](#)
 - Alter G, *et al.* 2008. *J. Virol.* 82:9668. [PubMed](#)
 - Manevich-Mendelson E, *et al.* 2009. *Blood* 114:2344. [PubMed](#)
 - Pinto JP, *et al.* 2010. *Immunology.* 130:217. [PubMed](#)
 - Biggs MJ, *et al.* 2011. *J. R. Soc. Interface.* 8:1462. [PubMed](#)

Description: CD3 ϵ is a 20 kD chain of the CD3/T cell receptor (TCR) complex, which is composed of two CD3 ϵ , one CD3 γ , one CD3 δ , one CD3 ζ (CD247), and a T cell receptor (α/β or γ/δ) heterodimer. It is found on all mature T lymphocytes, NK T cells, and some thymocytes. CD3, also known as T3, is a member of the immunoglobulin superfamily that plays a role in antigen recognition, signal transduction, and T cell activation.

Antigen
References:

1. Barclay N, *et al.* 1993. The Leucocyte FactsBook. Academic Press. San Diego.
2. Beverly P, *et al.* 1981. *Eur. J. Immunol.* 11:329.
3. Lanier L, *et al.* 1986. *J. Immunol.* 137:2501.