

APC/Cyanine7 anti-human Ig light chain λ

Catalog # / Size: 2183175 / 25 tests

Clone: MHL-38

Isotype: Mouse IgG2a, κ

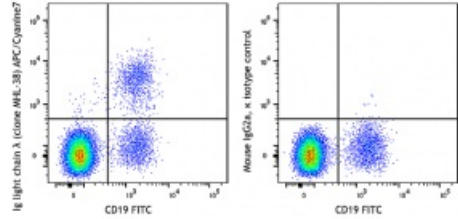
Immunogen: Human Ig cocktail

Reactivity: Human, Non-human primate, Other

Preparation: The antibody was purified by affinity chromatography and conjugated with APC/Cyanine7 under optimal conditions.

Formulation: Phosphate-buffered solution, pH 7.2, containing 0.09% sodium azide and 0.2% (w/v) BSA (origin USA)

Concentration: Lot-specific



Human peripheral blood lymphocytes were stained with CD19 FITC and anti-human Ig light chain λ (clone MHL-38) APC/Cyanine7 (left) or mouse IgG2a, κ APC/Cyanine7 isotype control (right).

Applications:

Applications: Flow Cytometry

Recommended Usage: Each lot of this antibody is quality control tested by immunofluorescent staining with flow cytometric analysis. For flow cytometric staining, the suggested use of this reagent is 5 μ L per million cells in 100 μ L staining volume or 5 μ L per 100 μ L of whole blood. It is recommended that the reagent be titrated for optimal performance for each application.

Application Notes: Clone MHL-38 is not compatible with Human TruStain FcX (Fc Receptor Blocking Solution) (Cat. No. 2711505 & 2711510).

Description: The MHL-38 antibody reacts with both soluble and membrane human immunoglobulin light chain lambda (λ). It does not react with human immunoglobulin light chain kappa (κ) or heavy chains. The MHL-38 antibody can be used as primary or secondary reagent for immunofluorescent staining or ELISA analysis.