

APC/Fire™ 750 anti-human Ig light chain λ

Catalog # / 2183125 / 100 tests
Size: 2183120 / 25 tests

Clone: MHL-38

Isotype: Mouse IgG2a, κ

Immunogen: Human Ig cocktail

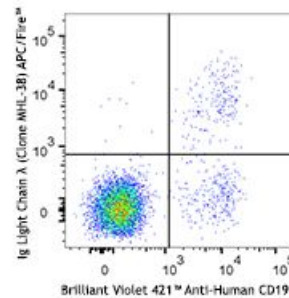
Reactivity: Human, Non-human primate, Other

Preparation: The antibody was purified by affinity chromatography and conjugated with APC/Fire™ 750 under optimal conditions.

Formulation: Phosphate-buffered solution, pH 7.2, containing 0.09% sodium azide and 0.2% (w/v) BSA (origin USA).

Workshop Number: VI MA36

Concentration: Lot-specific



Human peripheral blood lymphocytes stained with CD19 Brilliant Violet 421™ and anti-Human Ig Light Chain λ (clone MHL-38) APC/Fire™ 750 (top) or mouse IgG2a, κ APC/Fire™ 750 isotype control (bottom).

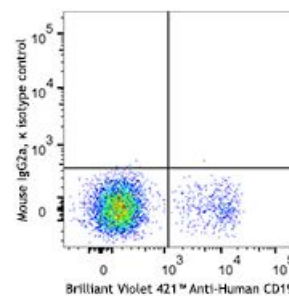
Applications:

Applications: Flow Cytometry

Recommended Usage: Each lot of this antibody is quality control tested by immunofluorescent staining with flow cytometric analysis. For flow cytometric staining, the suggested use of this reagent is 5 µl per million cells in 100 µl staining volume or 5 µl per 100 µl of whole blood.

* APC/Fire™ 750 has a maximum excitation of 650 nm and a maximum emission of 787 nm.

Application Notes: Clone MHL-38 is not compatible with Human TruStain FcX (Fc Receptor Blocking Solution) (Cat. No. 422301 & 422302).



**Application
References:**

1. McMichael A, et al. Eds. 1987. Leucocyte Typing III. Oxford University Press. New York.
 2. Schlossman S, et al. Eds. 1995. Leucocyte Typing V. Oxford University Press. New York. p. 874.
 3. Kishimoto T, et al. Eds. 1997. Leucocyte Typing VI. Garland Publishing Inc. London.
 4. Holl V, et al. 2004. *J. Immunol.* 173:6274.
 5. Hober D, et al. 2002. *J. Gen. Virol.* 83:2169.
 6. Cho HJ, et al. 2007. *Physiol Genomics* 149:60.
 7. van Tits L, et al. 2005. *Arterioscler Thromb Vasc Biol.* 25:717. [PubMed](#)
 8. Bruhns P, et al. 2008. *Blood* 113:3716. [PubMed](#)
 9. Yoshino N, et al. 2000. *Exp. Anim. (Tokyo)* 49:97. (FC)
 10. Carter DL, et al. 1999. *Cytometry* 37:41. (FC)
 11. Dougherty GJ, et al. 1987. *Eur. J. Immunol.* 17:1453.
 12. Blom AB, et al. 2003. *Arthritis Rheum.* 48(4):1002-14. (IHC)
-

Description: The MHL-38 antibody reacts with both soluble and membrane human immunoglobulin light chain lambda (λ). It does not react with human immunoglobulin light chain kappa (κ) or heavy chains. The MHL-38 antibody can be used as primary or secondary reagent for immunofluorescent staining or ELISA analysis.

**Antigen
References:**

1. Hulett M, et al. 1994. *Adv. Immunol.* 57:1.
2. van de Winkel J, et al. 1993. *Immunol. Today* 14:215.