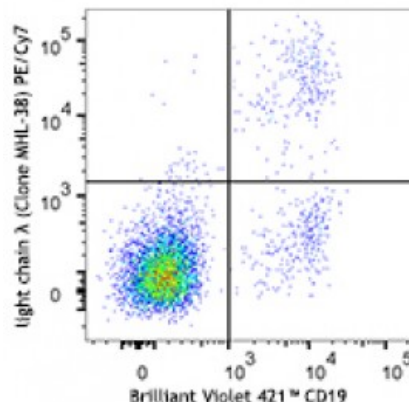


PE/Cy7 anti-human Ig light chain ?

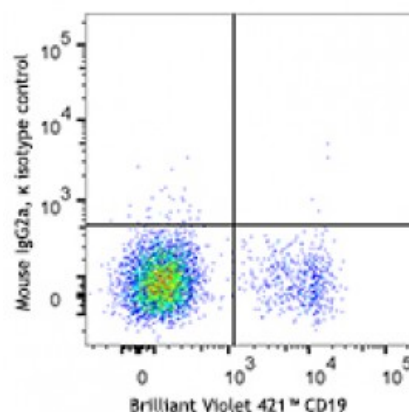
Catalog # / Size:	2183110 / 25 tests 2183115 / 100 tests
Clone:	MHL-38
Isotype:	Mouse IgG2a, κ
Immunogen:	Human Ig cocktail
Reactivity:	Human
Preparation:	The antibody was purified by affinity chromatography and conjugated with PE/Cy7 under optimal conditions. The solution is free of unconjugated PE/Cy7 and unconjugated antibody.
Formulation:	Phosphate-buffered solution, pH 7.2, containing 0.09% sodium azide and 0.2% (w/v) BSA (origin USA).
Concentration:	Lot-specific



Human peripheral blood lymphocytes stained with CD19 Brilliant Violet 421™ and anti-human Ig Light Chain γ (clone MHL-38) PE/Cy7 (top) or mouse IgG2a, κ PE/Cy7 isotype control (bottom).

Applications:

Applications:	Flow Cytometry
Recommended Usage:	Each lot of this antibody is quality control tested by immunofluorescent staining with flow cytometric analysis. For flow cytometric staining, the suggested use of this reagent is 5 microL per million cells or 5 microL per 100 microL of whole blood. It is recommended that the reagent be titrated for optimal performance for each application.
Application Notes:	Clone MHL-38 is not compatible with Human TruStain FcX (Fc Receptor Blocking Solution), Catalog #422301/422302.



Description: The MHL-38 antibody reacts with both soluble and membrane human immunoglobulin light chain λ (λ). It does not react with human immunoglobulin light chain κ (κ) or heavy chains. The MHL-38 antibody can be used as primary or secondary reagent for immunofluorescent staining or ELISA analysis.