

Pacific Blue™ anti-human Ig light chain λ

Catalog # / Size: 2183080 / 100 µg

Clone: MHL-38

Isotype: Mouse IgG2a, κ

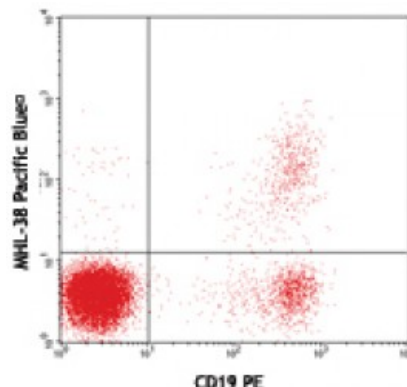
Immunogen: Human Ig cocktail

Reactivity: Human

Preparation: The antibody was purified by affinity chromatography, and conjugated with Pacific Blue™ under optimal conditions. The solution is free of unconjugated Pacific Blue™.

Formulation: Phosphate-buffered solution, pH 7.2, containing 0.09% sodium azide.

Concentration: 0.5



Human peripheral blood lymphocytes stained with CD19 PE and MHL-38 Pacific Blue™ (top) or mIgG2a, κ Pacific Blue™ isotype control (bottom).

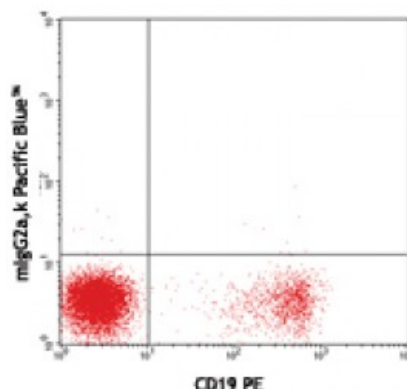
Applications:

Applications: Flow Cytometry

Recommended Usage: Each lot of this antibody is quality control tested by immunofluorescent staining with flow cytometric analysis. For flow cytometric staining, the suggested use of this reagent is ≤ 1.0 microg per 10⁶ cells in 100 microL volume or 100 microL of whole blood. It is recommended that the reagent be titrated for optimal performance for each application.

* Pacific Blue™ has a maximum emission of 455 nm when it is excited at 405 nm. Prior to using Pacific Blue™ conjugate for flow cytometric analysis, please verify your flow cytometer's capability of exciting and detecting the fluorochrome.

Application Notes: Clone MHL-38 is not compatible with Human TruStain FcX (Fc Receptor Blocking Solution), Catalog #422301/422302.



Description: The MHL-38 antibody reacts with both soluble and membrane human immunoglobulin light chain λ (λ). It does not react with human immunoglobulin light chain κ (κ) or heavy chains. The MHL-38 antibody can be used as primary or secondary reagent for immunofluorescent staining or ELISA analysis.