

**Alexa Fluor® 647 anti-human Ig light chain λ**

**Catalog # / Size:** 2183070 / 100 tests

**Clone:** MHL-38

**Isotype:** Mouse IgG2a, κ

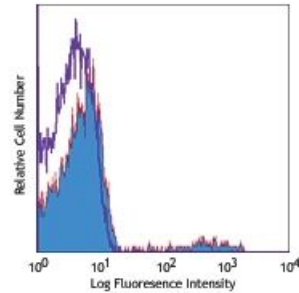
**Immunogen:** Human Ig cocktail

**Reactivity:** Human

**Preparation:** The antibody was purified by affinity chromatography, and conjugated with Alexa Fluor® 647 under optimal conditions.

**Formulation:** Phosphate-buffered solution, pH 7.2, containing 0.09% sodium azide and 0.2% (w/v) BSA (origin USA).

**Concentration:** Lot-specific



Human peripheral blood lymphocytes stained with MHL-38 Alexa Fluor® 647

**Applications:**

**Applications:** Flow Cytometry

**Recommended Usage:** Each lot of this antibody is quality control tested by immunofluorescent staining with flow cytometric analysis. For flow cytometric staining, the suggested use of this reagent is 5 microL per million cells or 5 microL per 100 microL of whole blood. It is recommended that the reagent be titrated for optimal performance for each application.

\* Alexa Fluor® 647 has a maximum emission of 668 nm when it is excited at 633nm / 635nm.

**Application Notes:** Clone MHL-38 is not compatible with Human TruStain FcX (Fc Receptor Blocking Solution), Catalog #422301/422302.

---

**Description:** The MHL-38 antibody reacts with both soluble and membrane human immunoglobulin light chain λ (λ). It does not react with human immunoglobulin light chain κ (κ) or heavy chains. The MHL-38 antibody can be used as primary or secondary reagent for immunofluorescent staining or ELISA analysis.