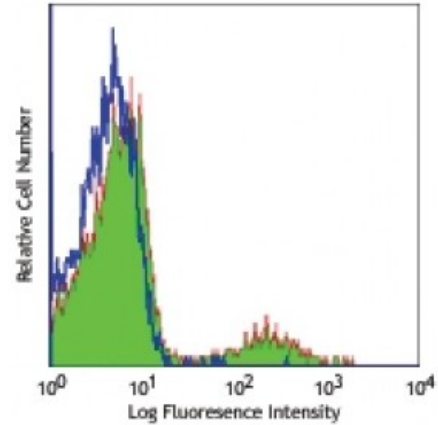


**FITC anti-human Ig light chain  $\lambda$**

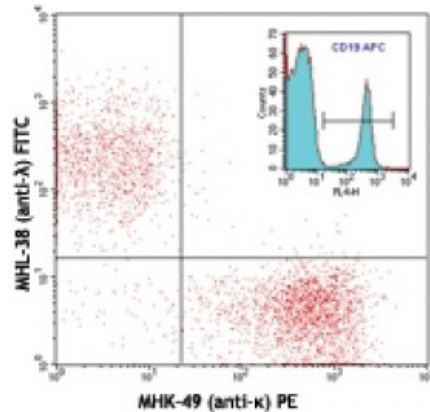
**Catalog # / Size:** 2183030 / 100 tests  
**Clone:** MHL-38  
**Isotype:** Mouse IgG2a,  $\kappa$   
**Immunogen:** Human Ig cocktail  
**Reactivity:** Human  
**Preparation:** The antibody was purified by affinity chromatography, and conjugated with FITC under optimal conditions. The solution is free of unconjugated FITC.  
**Formulation:** Phosphate-buffered solution, pH 7.2, containing 0.09% sodium azide and 0.2% (w/v) BSA (origin USA).  
**Concentration:** Lot-specific



Human peripheral blood lymphocytes stained with MHL-38 FITC

**Applications:**

**Applications:** Flow Cytometry  
**Recommended Usage:** Each lot of this antibody is quality control tested by immunofluorescent staining with flow cytometric analysis. **Test size products are transitioning from 20 microL to 5 microL per test.** Please check your vial or your CoA to find the suggested use of this reagent per million cells in 100 microL staining volume or per 100 microL of whole blood. It is recommended that the reagent be titrated for optimal performance for each application.  
**Application Notes:** Clone MHL-38 is not compatible with Human TruStain FcX (Fc Receptor Blocking Solution), Catalog #422301/422302.



CD19<sup>+</sup> human B-lymphocytes stained with MHL-38 (anti- $\lambda$ ) FITC and MHK-49 (anti- $\kappa$ ) PE

**Description:** The MHL-38 antibody reacts with both soluble and membrane human immunoglobulin light chain  $\lambda$  ( $\lambda$ ). It does not react with human immunoglobulin light chain  $\kappa$  ( $\kappa$ ) or heavy chains. The MHL-38 antibody can be used as primary or secondary reagent for immunofluorescent staining or ELISA analysis.