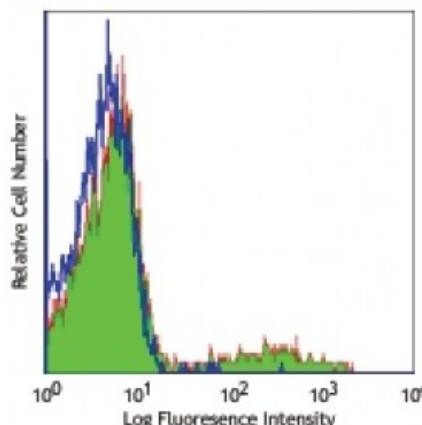


Purified anti-human Ig light chain λ

Catalog # / Size: 2183010 / 100 µg
Clone: MHL-38
Isotype: Mouse IgG2a, κ
Immunogen: Human Ig cocktail
Reactivity: Human
Preparation: The antibody was purified by affinity chromatography.
Formulation: Phosphate-buffered solution, pH 7.2, containing 0.09% sodium azide.
Concentration: 0.5



Over night cultured human peripheral blood lymphocytes stained with purified MHL-38, followed by anti-mouse IgG FITC

Applications:

Applications: Other

Recommended Usage: Each lot of this antibody is quality control tested by immunofluorescent staining with flow cytometric analysis. For flow cytometric staining, the suggested use of this reagent is ≤ 0.5 microg per 10⁶ in 100 microL staining volume or 100 microL of whole blood. It is recommended that the reagent be titrated for optimal performance for each application.

Application Notes: Clone MHL-38 is not compatible with Human TruStain FcX (Fc Receptor Blocking Solution), Catalog #422301/422302.

Application References: 1. Lockridge JL, *et al.* 2013. *Biol. Blood Marrow Transplant* 9:1310-22. (ELISA)

Description: The MHL-38 antibody reacts with both soluble and membrane human immunoglobulin light chain λ (λ). It does not react with human immunoglobulin light chain κ (κ) or heavy chains. The MHL-38 antibody can be used as primary or secondary reagent for immunofluorescent staining or ELISA analysis.