

**Pacific Blue™ anti-human Ig light chain κ**

**Catalog # / Size:** 2182615 / 25 tests  
2182620 / 100 tests

**Clone:** MHK-49

**Isotype:** Mouse IgG1, κ

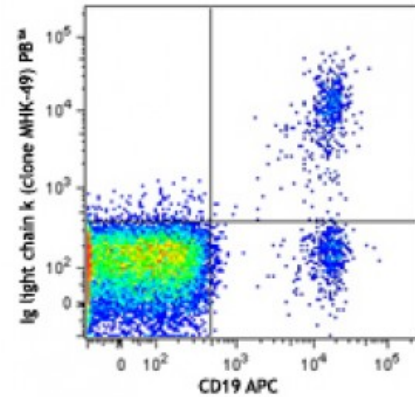
**Immunogen:** Human Ig cocktail

**Reactivity:** Human

**Preparation:** The antibody was purified by affinity chromatography and conjugated with Pacific Blue™ under optimal conditions. The solution is free of unconjugated Pacific Blue™.

**Formulation:** Phosphate-buffered solution, pH 7.2, containing 0.09% sodium azide and 0.2% (w/v) BSA (origin USA).

**Concentration:** Lot-specific



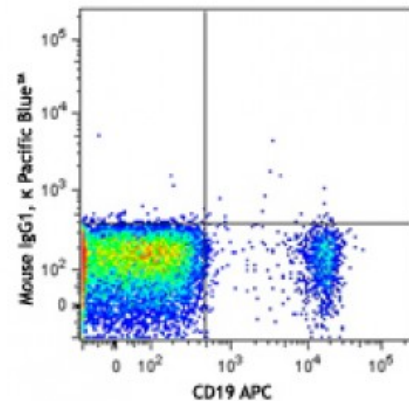
Human peripheral blood lymphocytes were stained with CD19 APC and Ig light chain κ (clone MHK-49, top) Pacific Blue™ or mouse IgG1, κ Pacific Blue™ isotype control (bottom).

**Applications:**

**Applications:** Flow Cytometry

**Recommended Usage:** Each lot of this antibody is quality control tested by immunofluorescent staining with flow cytometric analysis. For flow cytometric staining, the suggested use of this reagent is 5 microL per million cells or 5 microL per 100 microL of whole blood. It is recommended that the reagent be titrated for optimal performance for each application.

\* Pacific Blue™ has a maximum emission of 455 nm when it is excited at 405 nm. Prior to using Pacific Blue™ conjugate for flow cytometric analysis, please verify your flow cytometer's capability of exciting and detecting the fluorochrome.



**Application References:** 1. Lockridge JL, *et al.* 2013. *Biol. Blood Marrow Transplant* 9:1310-22. (ELISA)

**Description:** The MHK-49 antibody reacts with both soluble and membrane human immunoglobulin light chain κ (κ). It does not react with human immunoglobulin light chain λ (λ) or heavy chain. The MHK-49 antibody can be used as primary or secondary reagent for immunofluorescent staining or ELISA analysis.