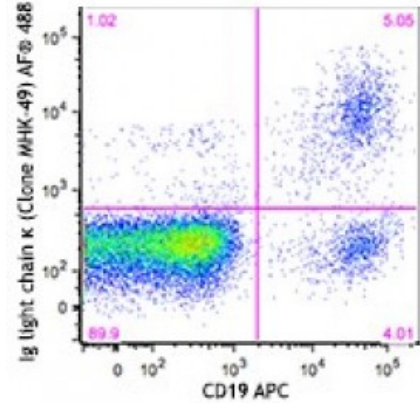


**Alexa Fluor® 488 anti-human Ig light chain κ**

**Catalog # / Size:** 2182560 / 100 tests  
**Clone:** MHK-49  
**Isotype:** Mouse IgG1, κ  
**Immunogen:** Human Ig cocktail  
**Reactivity:** Human  
**Preparation:** The antibody was purified by affinity chromatography, and conjugated with Alexa Fluor® 488 under optimal conditions.  
**Formulation:** Phosphate-buffered solution, pH 7.2, containing 0.09% sodium azide and 0.2% (w/v) BSA (origin USA).  
**Concentration:** Lot-specific

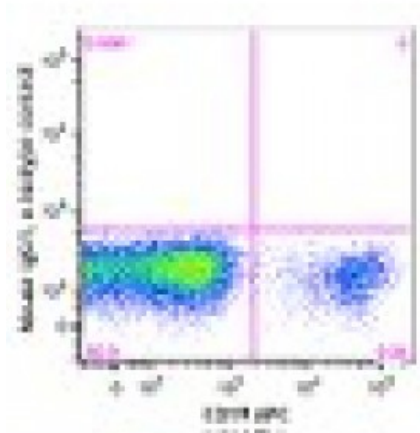


Overnight cultured human peripheral blood lymphocytes were stained with CD19 APC and Ig light chain κ (clone MHK-49) Alexa Fluor® 488 (top) or mouse IgG1, κ Alexa Fluor® 488 isotype control (bottom).

**Applications:**

**Applications:** Flow Cytometry  
**Recommended Usage:** Each lot of this antibody is quality control tested by immunofluorescent staining with flow cytometric analysis. For flow cytometric staining, the suggested use of this reagent is 5 microL per million cells or 5 microL per 100 microL of whole blood. It is recommended that the reagent be titrated for optimal performance for each application.

\* Alexa Fluor® 488 has a maximum emission of 519 nm when it is excited at 488 nm.



**Application References:** 1. Lockridge JL, *et al.* 2013. *Biol. Blood Marrow Transplant* 9:1310-22. (ELISA)

**Description:** The MHK-49 antibody reacts with both soluble and membrane human immunoglobulin light chain κ (κ). It does not react with human immunoglobulin light chain λ (λ) or heavy chain. The MHK-49 antibody can be used as primary or secondary reagent for immunofluorescent staining or ELISA analysis.