

## PE anti-human Ig light chain $\kappa$

**Catalog # / Size:** 2182535 / 25 tests  
2182540 / 100 tests

**Clone:** MHK-49

**Isotype:** Mouse IgG1,  $\kappa$

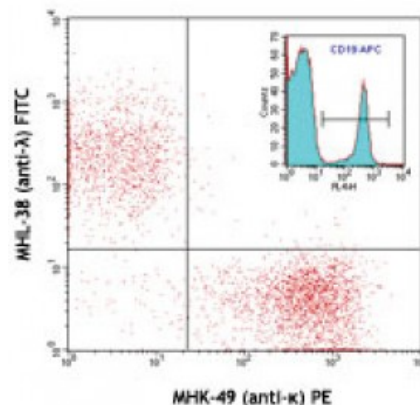
**Immunogen:** Human Ig cocktail

**Reactivity:** Human

**Preparation:** The antibody was purified by affinity chromatography, and conjugated with PE under optimal conditions. The solution is free of unconjugated PE and unconjugated antibody.

**Formulation:** Phosphate-buffered solution, pH 7.2, containing 0.09% sodium azide and 0.2% (w/v) BSA (origin USA).

**Concentration:** Lot-specific



CD19<sup>+</sup> human B-lymphocytes stained with MHL-38 (anti- $\lambda$ ) FITC and MHK-49 (anti- $\kappa$ ) PE

## Applications:

**Applications:** Flow Cytometry

**Recommended Usage:** Each lot of this antibody is quality control tested by immunofluorescent staining with flow cytometric analysis. **Test size products are transitioning from 20 microL to 5 microL per test.** Please check your vial or your CoA to find the suggested use of this reagent per million cells in 100 microL staining volume or per 100 microL of whole blood. It is recommended that the reagent be titrated for optimal performance for each application.

**Application References:** 1. Lockridge JL, *et al.* 2013. *Biol. Blood Marrow Transplant* 9:1310-22. (ELISA)

**Description:** The MHK-49 antibody reacts with both soluble and membrane human immunoglobulin light chain  $\kappa$  ( $\kappa$ ). It does not react with human immunoglobulin light chain  $\lambda$  ( $\lambda$ ) or heavy chain. The MHK-49 antibody can be used as primary or secondary reagent for immunofluorescent staining or ELISA analysis.